



Define Your Horizon

[www.horizonyacht.com](http://www.horizonyacht.com)

HORIZON E Series



E Series  
56ft - 98ft

## Horizon E Series



Redefining Luxury





*E Series*

## E Series

SLEEK AND STYLISH

E56 | E56XO | E62 | E75 | E78 | E84 | E88 | E98

Horizon's most popular series, the E Series blends luxury and elegance with functional design in classic flybridge motoryachts from 56 to 98 feet. Enclosed Bridge and Cockpit motoryacht versions are offered on select models with a multitude of layout options, allowing the E Series to satisfy virtually any cruising lifestyle.



# E98



HORIZON | E SERIES



WORLD CLASS YACHTS | E98









The standard layout includes a main salon, formal dining, galley, and country kitchen forward on the main deck. As shown, this layout has no formal dining and instead offers an enlarged salon and breakfast bar.





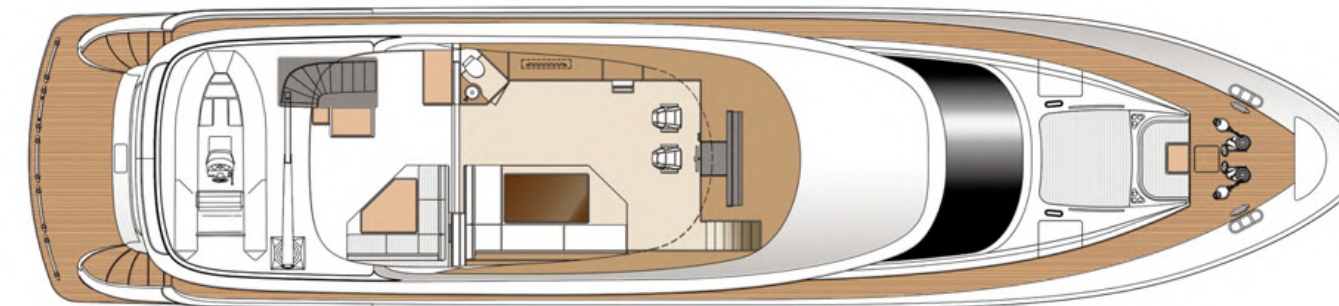
# E98 Skylounge

Technical Specifications



L.O.A	99'-6" (30.33m)
L.W.L	86'-3" (26.30m)
Beam	23'-2 3/8" (7.07m)
Draft	6'-0" (1.83m)
Displacement (half load)	235,890 lbs (107 tons)
Fuel	4,500 US gals (17,000 ltrs)
Fresh Water	600 US gals (2,270 ltrs)
Engines	Twin CAT C32A - 1600hp
Generator	Twin Onan 35kW (50Hz) or Twin N.L. 38kW (60Hz)
Max Speed (half load)	20.5 knots
Cruising Range (half load)	1500 nm @ 12 knots

\*Optional items may be included in the drawing and are for reference only.



UPPER DECK



MAIN DECK



LOWER DECK



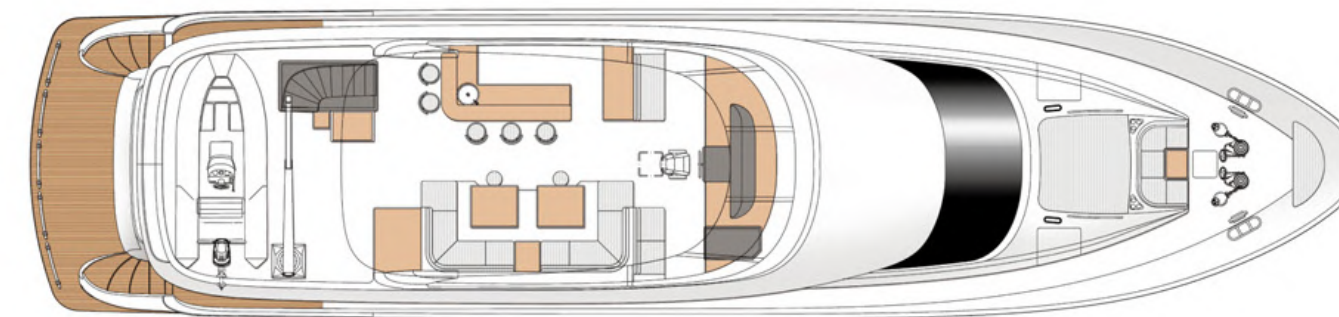
# E98 *Open Bridge*

Technical Specifications

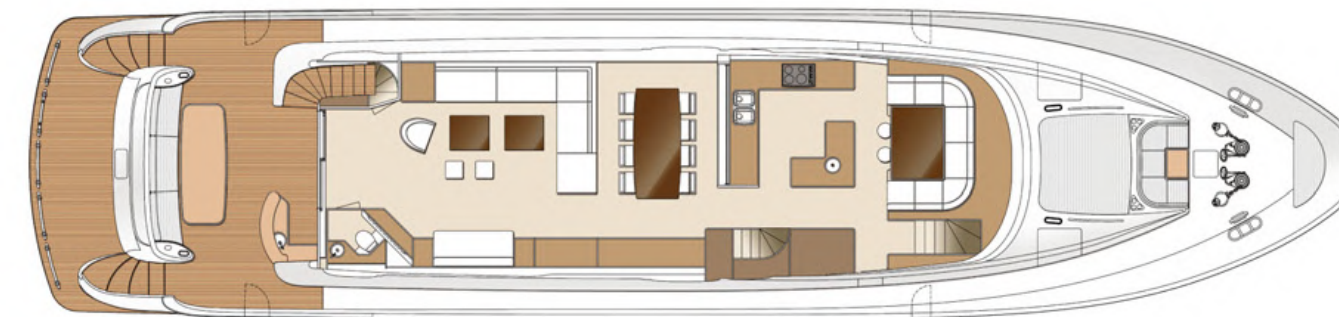


\*Optional items may be included in the drawing and are for reference only.

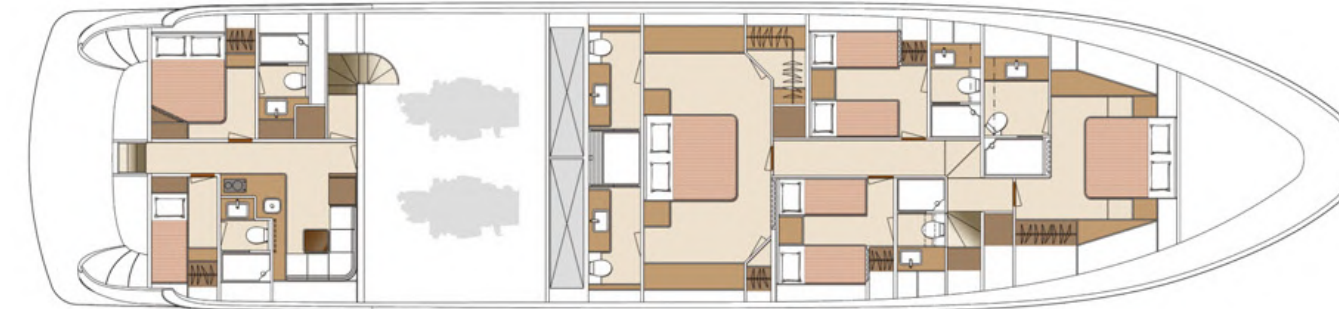
HORIZON | E SERIES



UPPER DECK



MAIN DECK



LOWER DECK





E88

HORIZON | E SERIES



A voluminous beach club and a thoughtfully-designed foldout swim ladder are perfect for water activities.





Custom outdoor LED lighting provides a modern ambience.



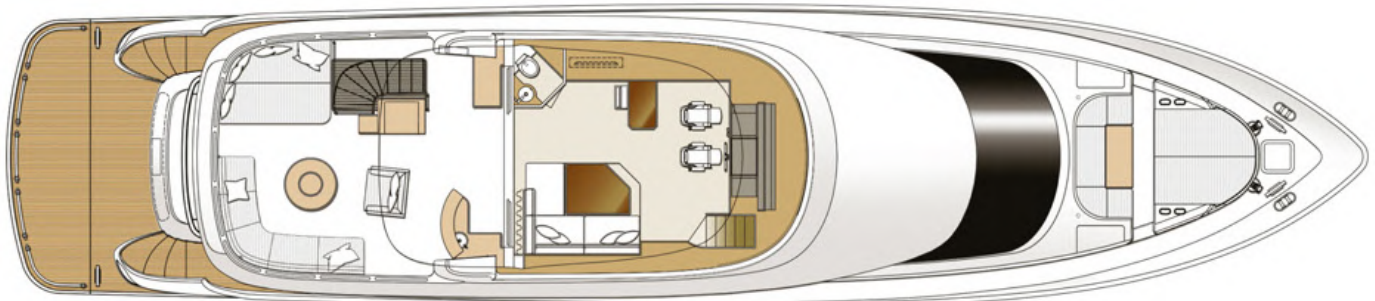




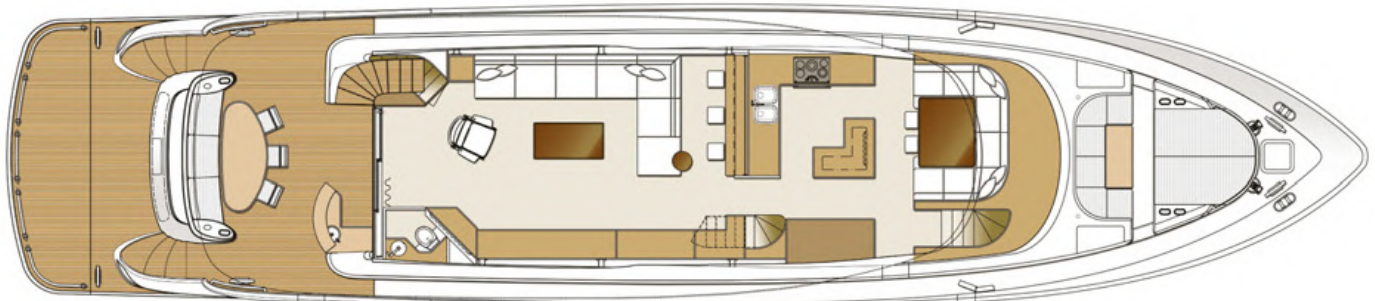
E88 *Skylounge*  
Technical Specifications



L.O.A	89'-4 1/2" (27.24m)
L.W.L	77'-1/2" (23.48m)
Beam	21'-0" (6.40m)
Draft	5'-4 1/2" (1.64m)
Displacement (half load)	182,300 lbs (82.7 tons)
Fuel	2,700 US gals (10,220 ltrs)
Fresh Water	500 US gals (1,890 ltrs)
Engines	Twin CAT C32A - 1600hp or Twin MAN V12-1550hp
Generator	Twin Onan 22.5kW (50Hz) or Twin Onan 29kW (60Hz)
Max Speed (half load)	23 knots
Cruising Range (half load)	1400 nm @ 10 knots



UPPER DECK



MAIN DECK



LOWER DECK

\*Optional items may be included in the drawing and are for reference only.



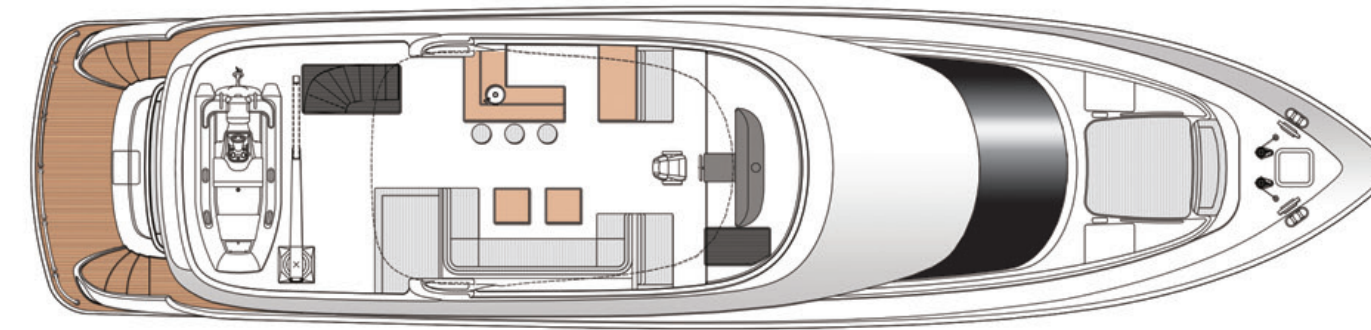
# E88

*Open Bridge*  
Technical Specifications

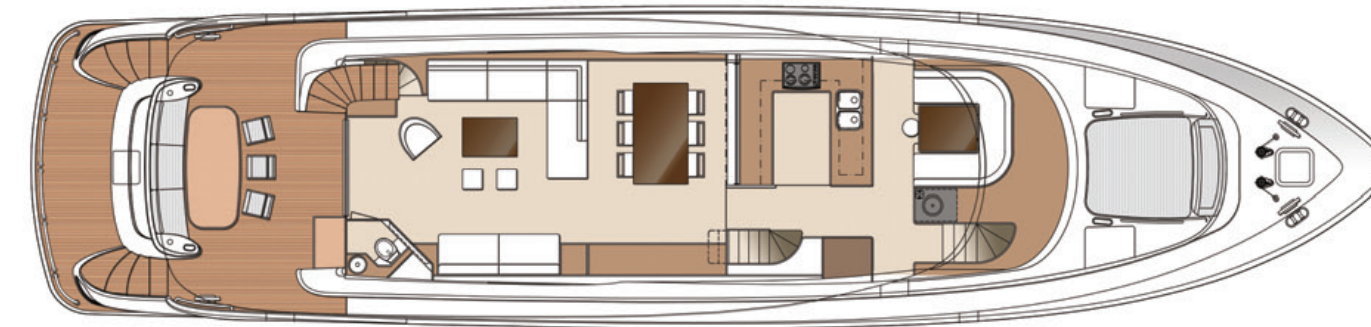
HORIZON | E SERIES



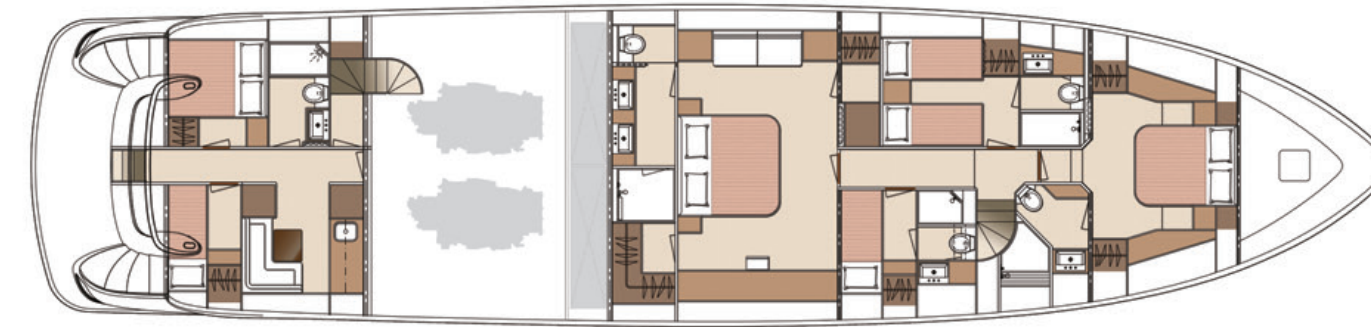
\*Optional items may be included in the drawing and are for reference only.



UPPER DECK



MAIN DECK



LOWER DECK





E84









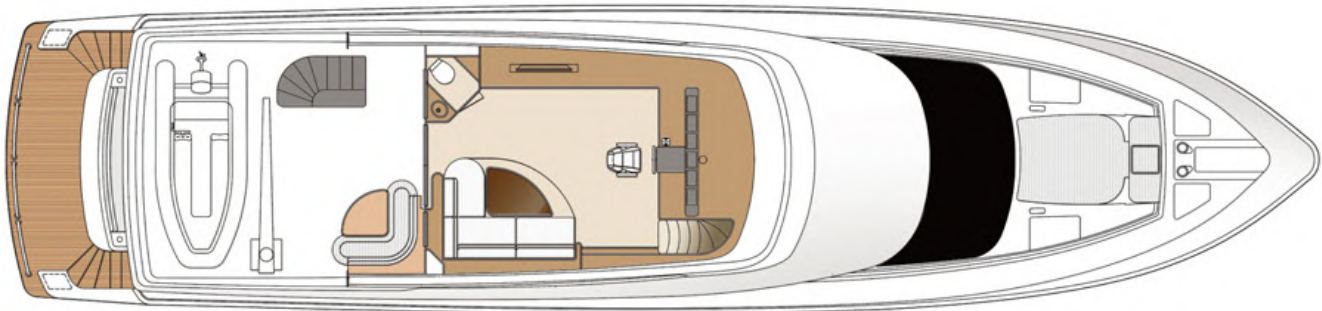




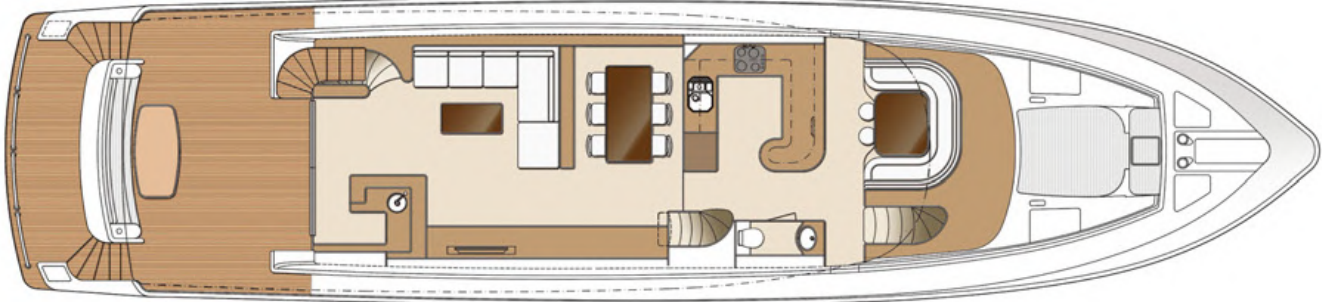
E84 Skylounge  
Technical Specifications



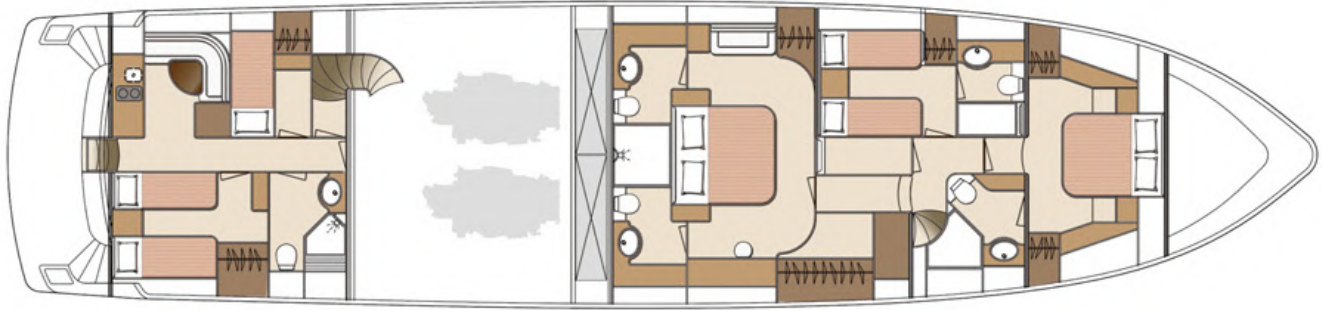
L.O.A	85'-0" (25.91m)
L.W.L	73'-1" (22.28m)
Beam	20'-0" (6.10m)
Draft	5'-9" (1.76m)
Displacement (half load)	159,800 lbs (72.5 tons)
Fuel	2,250 US gals (8,500 ltrs)
Fresh Water	420 US gals (1,600 ltrs)
Engines	Twin CAT C32A - 1600hp or Twin MAN V12-1550hp
Generator	Twin Onan 22.5kW (50Hz) or Twin Onan 29kW (60Hz)
Max Speed (half load)	25 knots
Cruising Range (half load)	1100 nm @ 11 knots



UPPER DECK



MAIN DECK



LOWER DECK

\*Optional items may be included in the drawing and are for reference only.



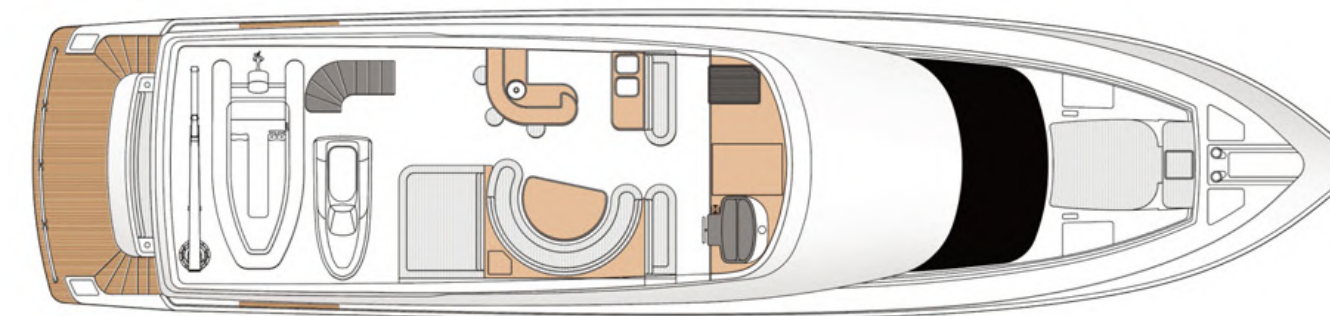
# E84 *Open Bridge*

Technical Specifications

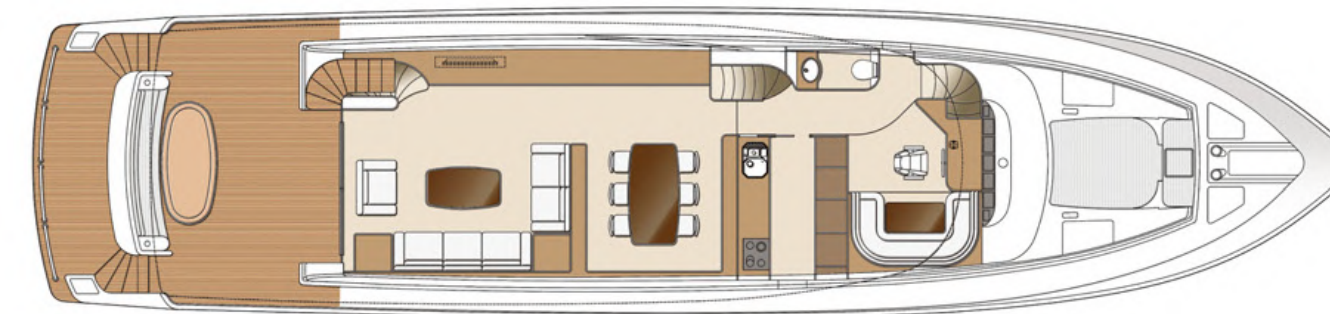
HORIZON | E SERIES



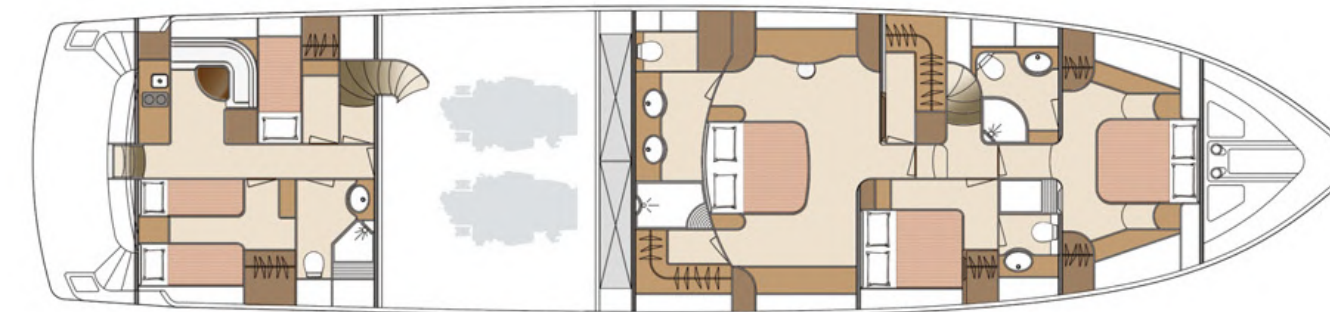
\*Optional items may be included in the drawing and are for reference only.



UPPER DECK



MAIN DECK



LOWER DECK



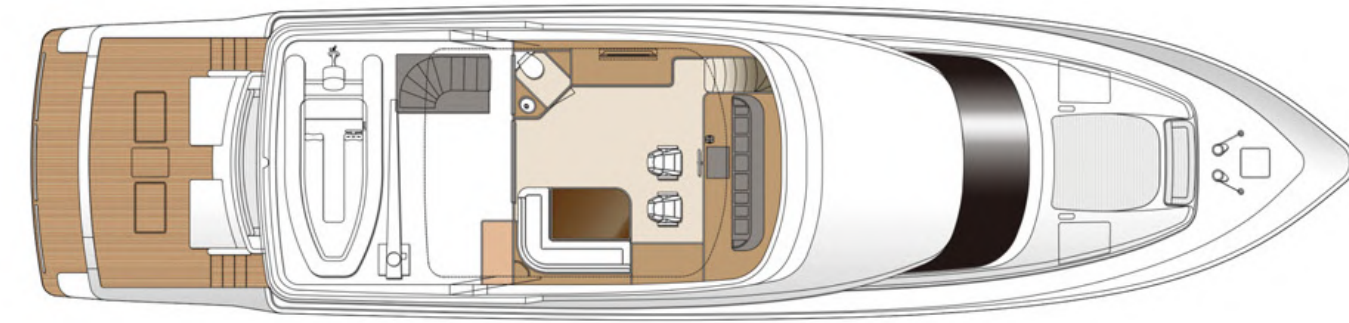
# E84 Cockpit

Technical Specifications

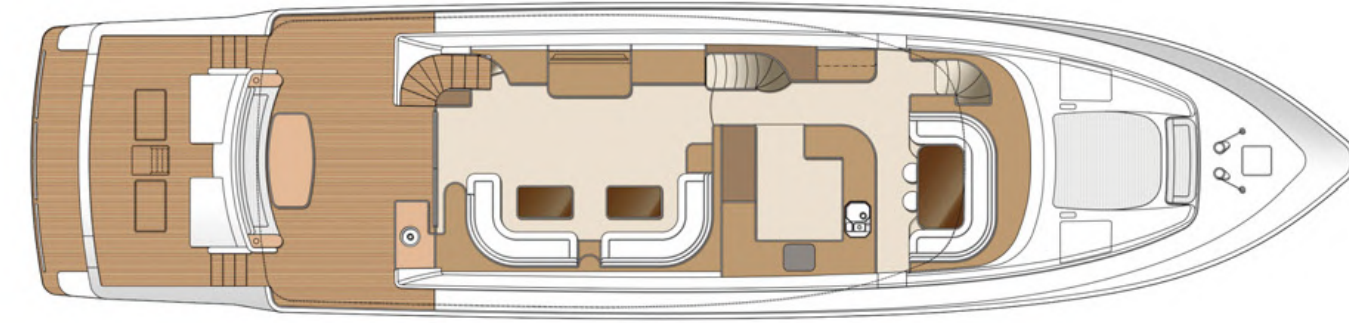


\*Optional items may be included in the drawing and are for reference only.

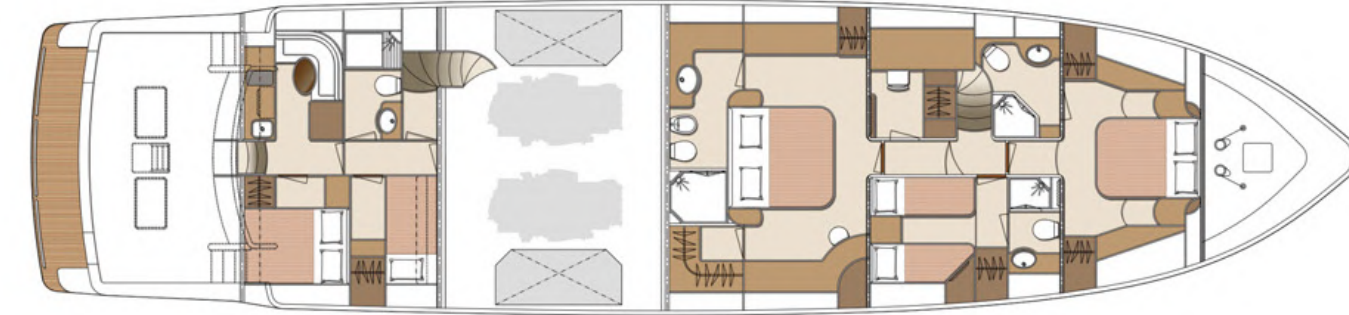
HORIZON | E SERIES



UPPER DECK



MAIN DECK



LOWER DECK





# E78



Customized features, such as the innovative hydraulic hard top, set the E78 apart in her class.

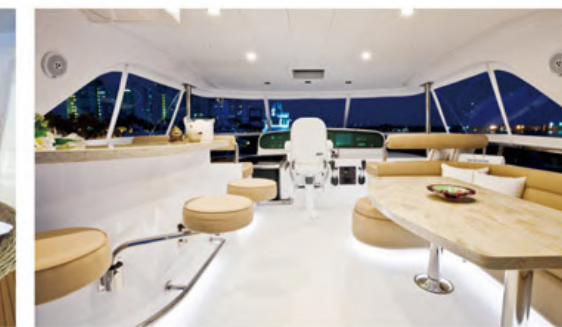


HORIZON | E SERIES



WORLD CLASS YACHTS | E78







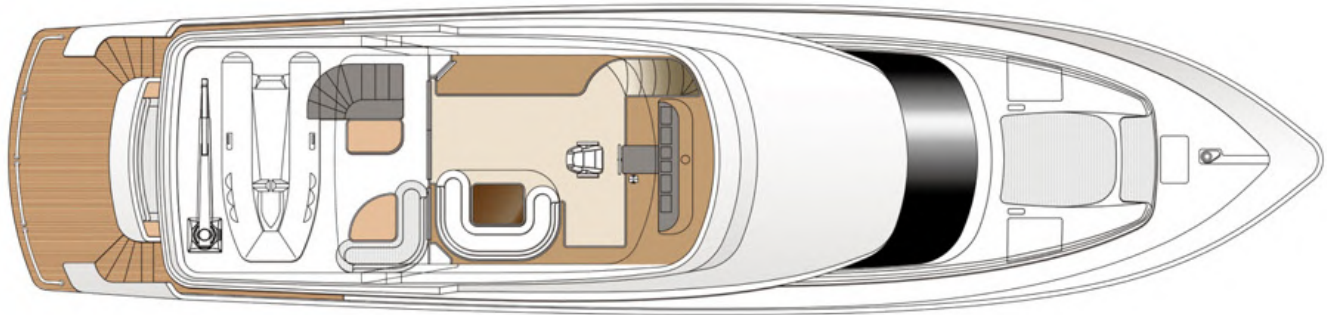




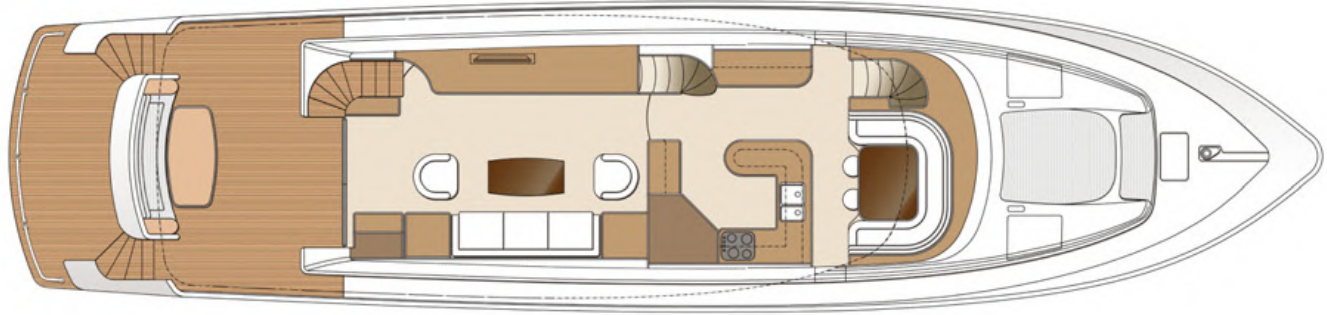
E78 Skylounge  
Technical Specifications



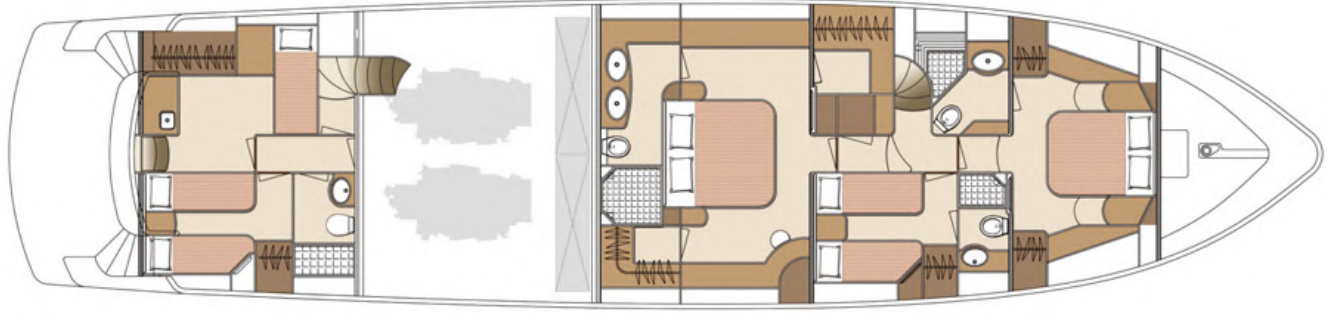
L.O.A	78'-6" (23.93m)
L.W.L	68'-1" (20.75m)
Beam	18'-9" (5.70m)
Draft	5'-7" (1.70m)
Displacement (half load)	144,400 lbs (65.5 tons)
Fuel	1,850 US gals (7,000 ltrs)
Fresh Water	400 US gals (1,500 ltrs)
Engines	Twin CAT C32A - 1600hp or Twin MAN V12-1550hp
Generator	Twin Onan 22.5kW (50Hz) or Twin Onan 29kW (60Hz)
Max Speed (half load)	25 knots
Cruising Range (half load)	900 nm @ 11 knots



UPPER DECK



MAIN DECK



LOWER DECK

\*Optional items may be included in the drawing and are for reference only.



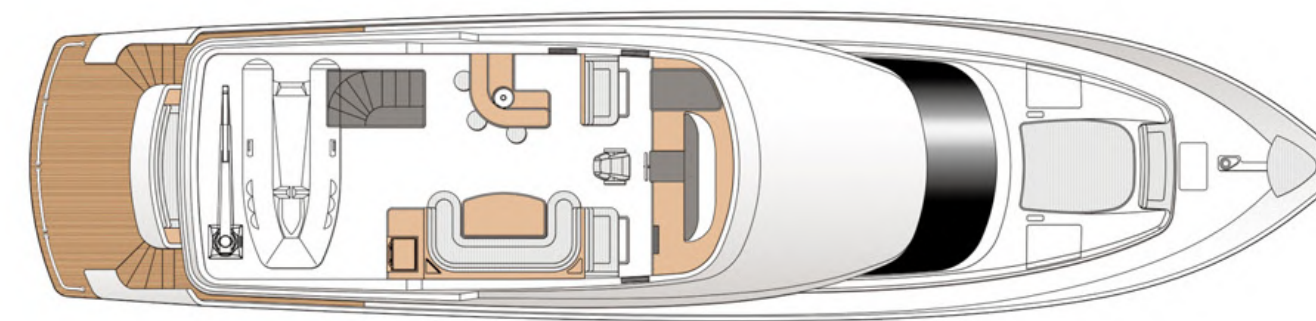
# E78 *Open Bridge*

Technical Specifications

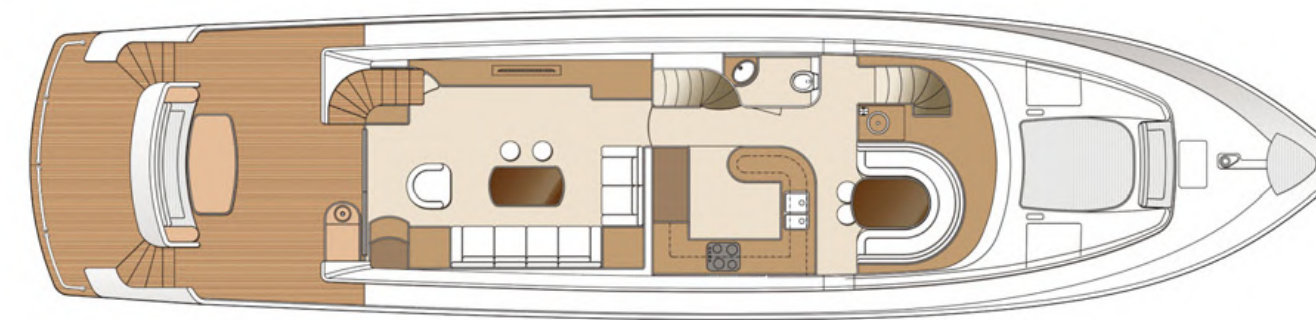


\*Optional items may be included in the drawing and are for reference only.

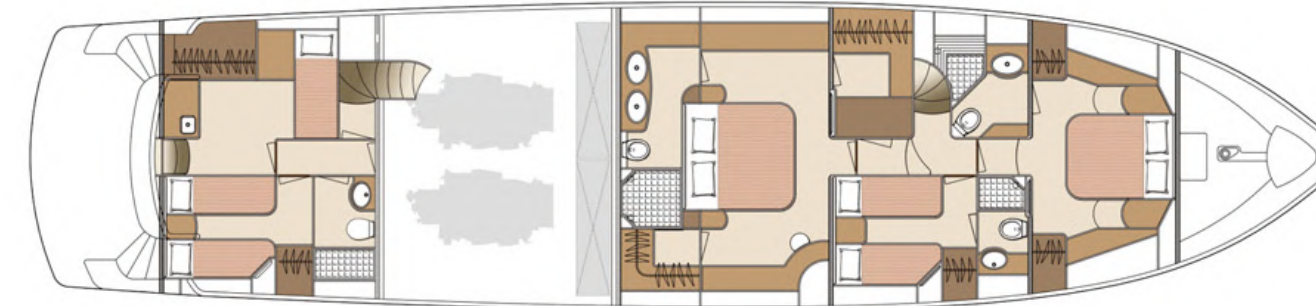
HORIZON | E SERIES



UPPER DECK



MAIN DECK



LOWER DECK















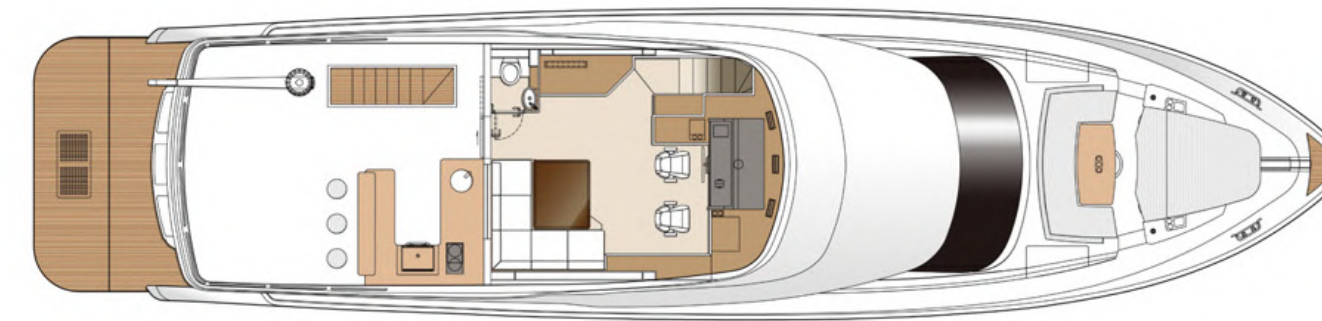
# E75 Skylounge

Technical Specifications

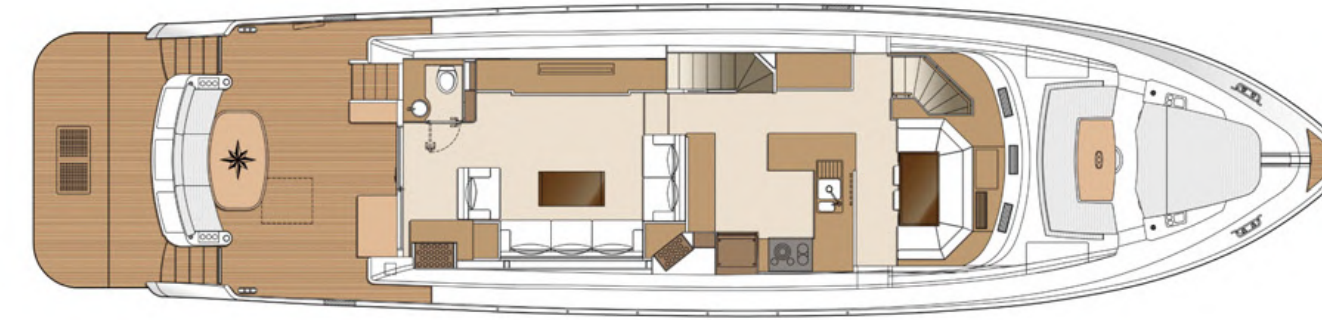


L.O.A	76'-3" (23.24m)
L.W.L	64'-8 3/4" (19.73m)
Beam	18'-6" (5.64m)
Draft	5'-9" (1.75m)
Displacement (half load)	123,679 lbs (56.1 tons)
Fuel	1,720 US gals (6,500 ltrs)
Fresh Water	400 US gals (1,500 ltrs)
Engines	Twin Caterpillar C18 ACERT-1136bhp
Generator	Twin Onan 22.5kW (50Hz) or Twin Onan 29kW (60Hz)
Max Speed (half load)	22.3 knots
Cruising Range (half load)	374 nm @ 19.2 knots

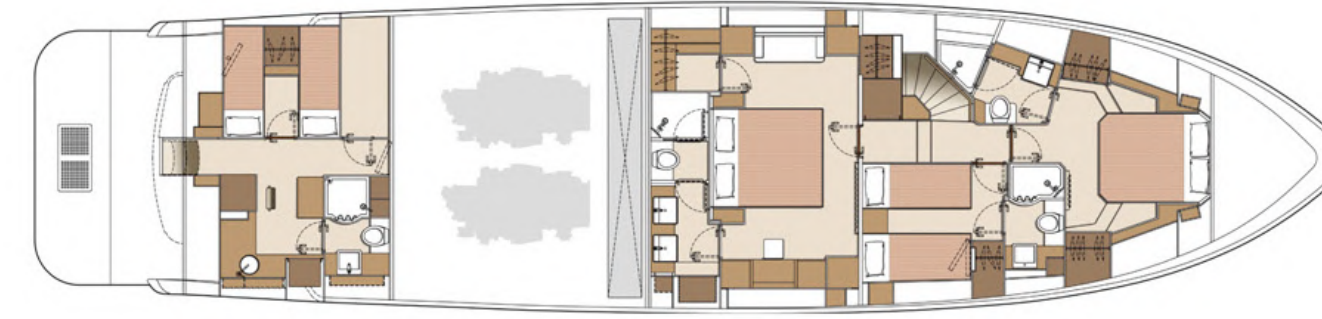
\*Optional items may be included in the drawing and are for reference only.



UPPER DECK



MAIN DECK



LOWER DECK



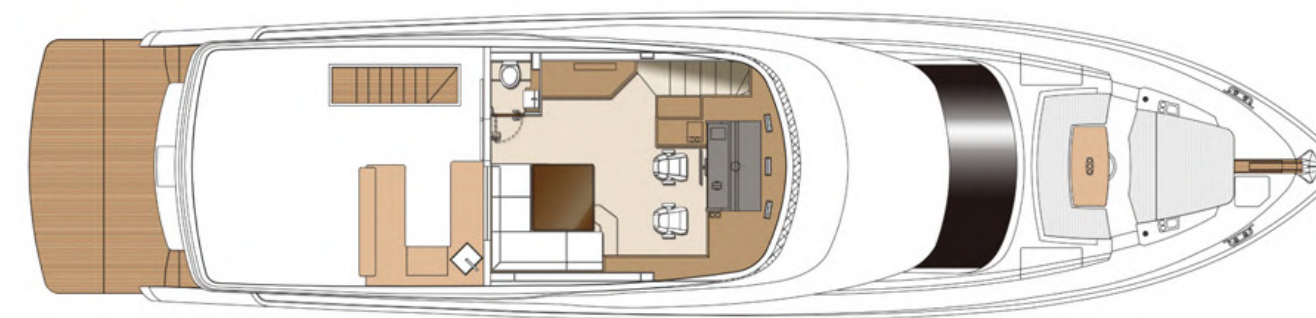
# E75 Skylounge

## Technical Specifications

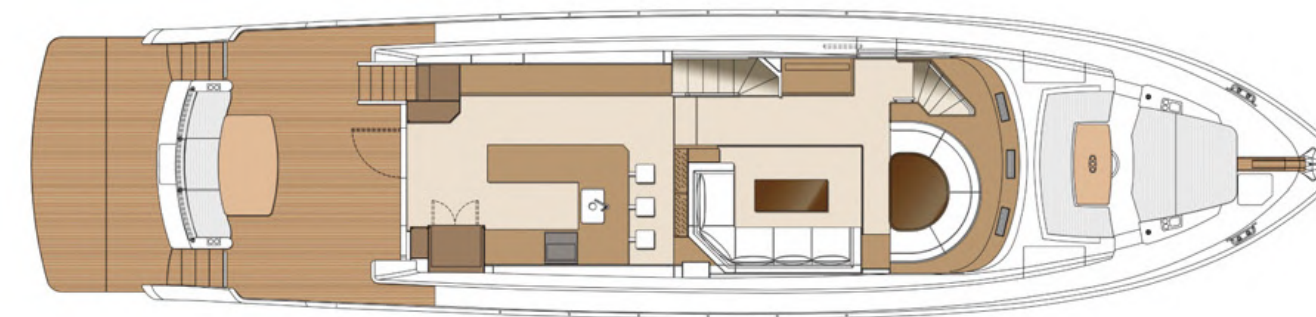


\*Optional items may be included in the drawing and are for reference only.

Galley Aft Layout



UPPER DECK



MAIN DECK



LOWER DECK



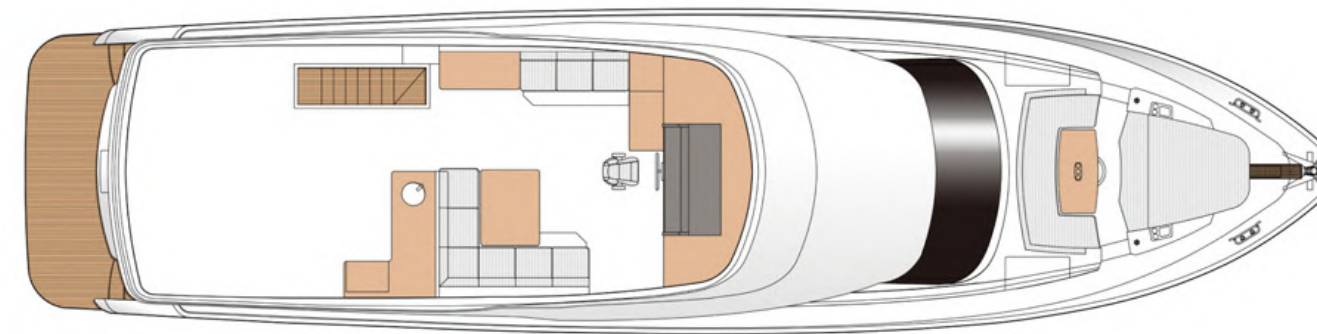
# E75 *Open Bridge*

## Technical Specifications



\*Optional items may be included in the drawing and are for reference only.

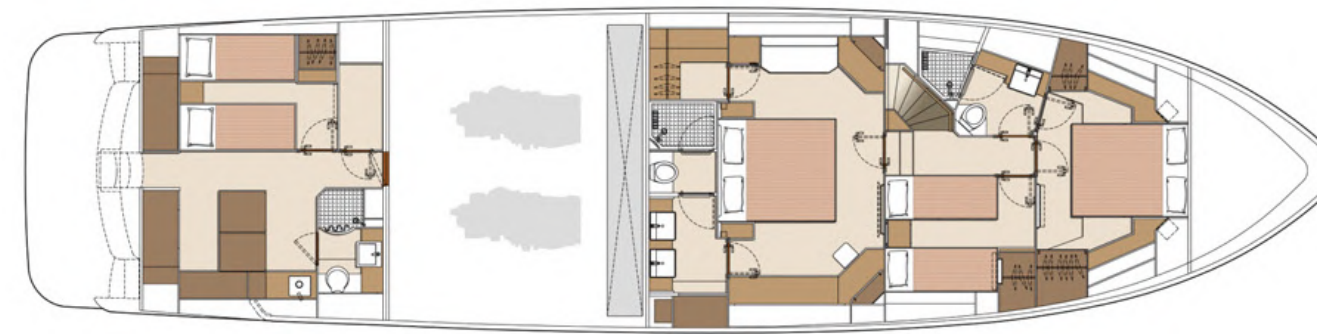
HORIZON | E SERIES



UPPER DECK



MAIN DECK



LOWER DECK









The E62 is packed with amenities for the active cruiser, such as the live bait tank in the cockpit.









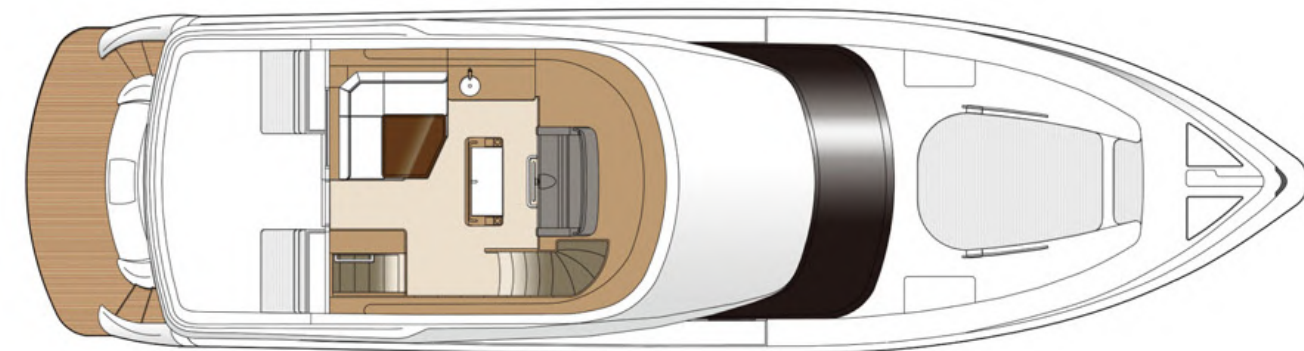
# E62 Skylounge

Technical Specifications

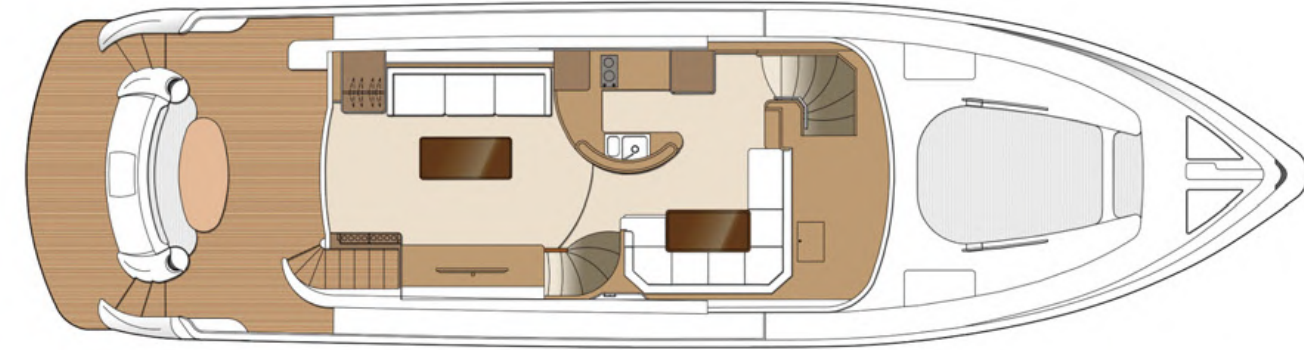


L.O.A	64'-5" (19.63m)
L.W.L	53'-3" (16.23m)
Beam	17'-5" (5.30m)
Draft	5'-9" (1.75m)
Displacement (half load)	89,794 lbs (40.73 tons)
Fuel	1,000 US gals (3,785 ltrs)
Fresh Water	350 US gals (1,325 ltrs)
Engines	Twin Caterpillar C18 ACERT-1136hp
Generator	Onan 13.5kW (50Hz) or Onan 17kW (60Hz)
Max Speed (half load)	25.7 knots
Cruising Range (half load)	251 nm @ 22.2 knots

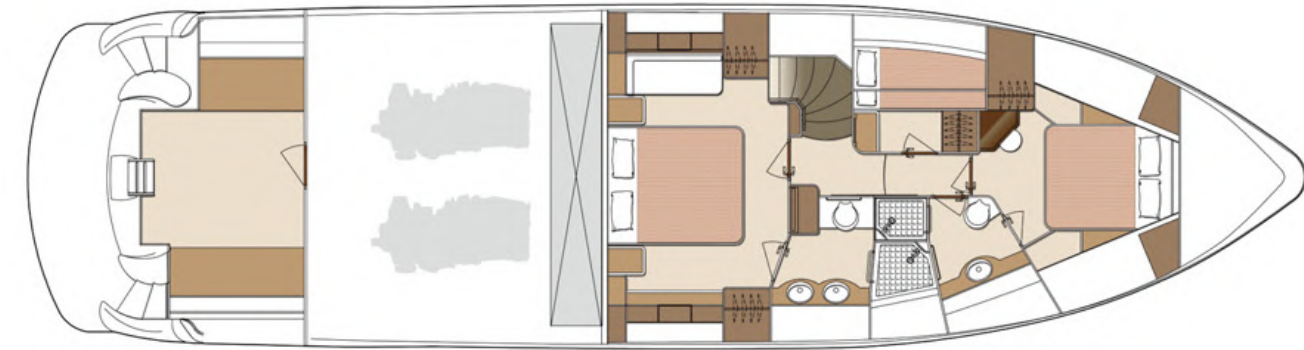
\*Optional items may be included in the drawing and are for reference only.



UPPER DECK



MAIN DECK

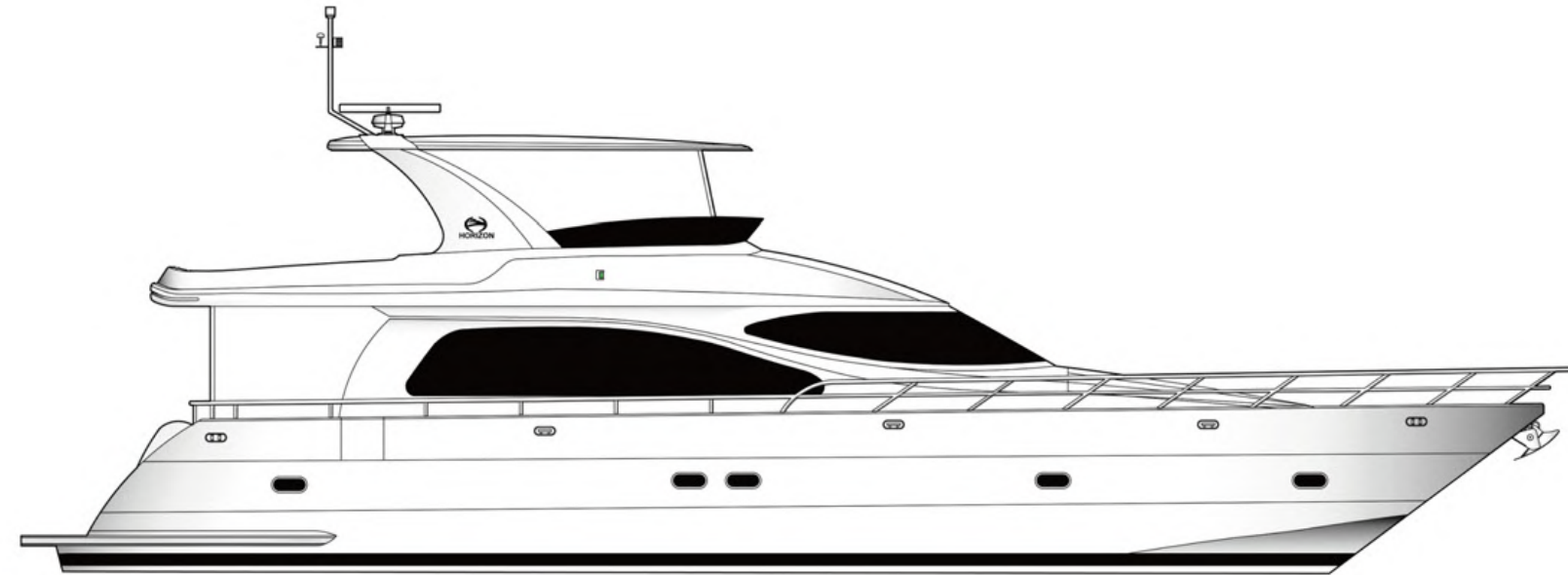


LOWER DECK



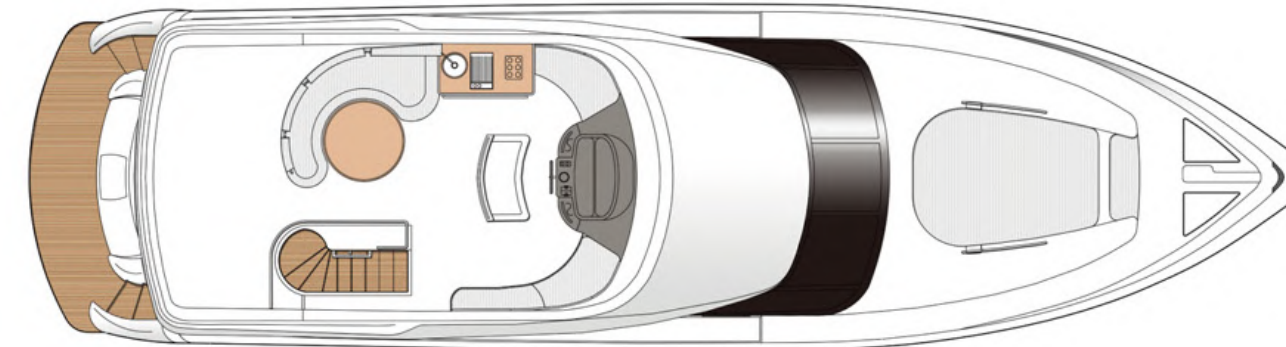
# E62 *Open Bridge*

Technical Specifications

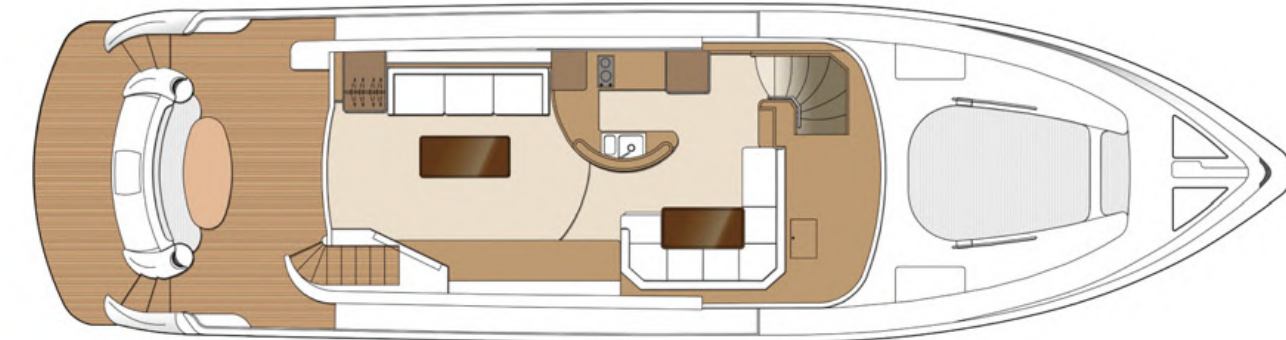


\*Optional items may be included in the drawing and are for reference only.

HORIZON | E SERIES



UPPER DECK



MAIN DECK



LOWER DECK







For alfresco fun, the aft deck features a dining area as well as a live bait tank, BBQ, prep sink, and storage.



The galley is easily accessible to the aft deck for seamless entertaining.









# E56XO

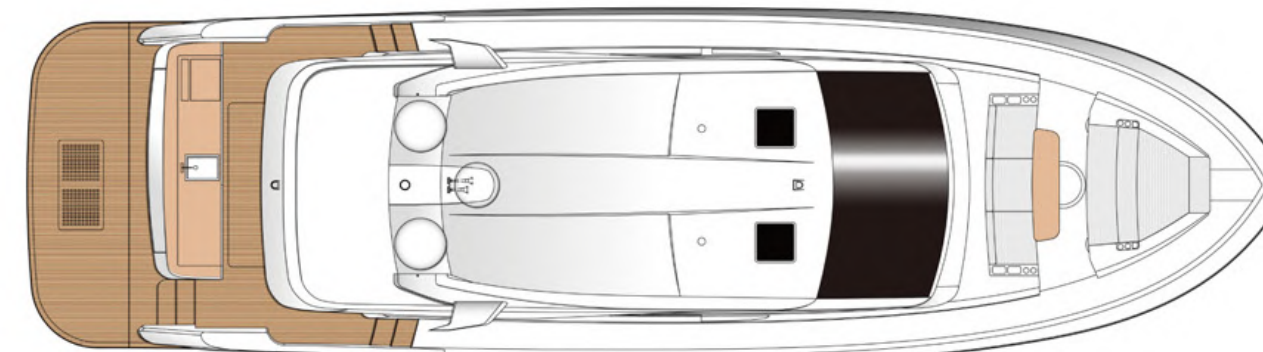
## Technical Specifications



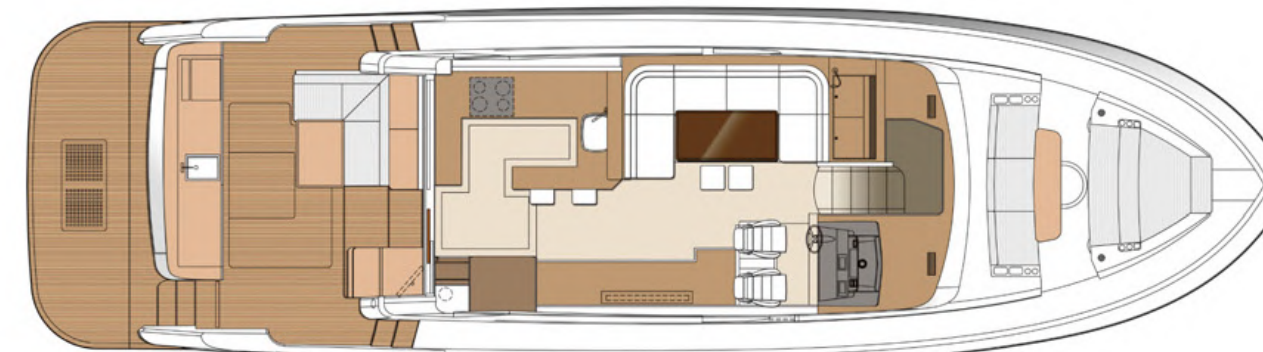
L.O.A	56'-0" (17.07m)
L.W.L	44'-10" (13.67m)
Beam	15'-9" (4.80m)
Draft	4'-5" (1.35m)
Displacement (half load)	54,454 lbs (23.80 tons)
Fuel	800 US gals (3,028 ltrs)
Fresh Water	195 US gals (738 ltrs)
Engines	Twin Volvo Penta IPS 950 (725hp)
Generator	Onan 13.5kW (50Hz) or Onan 17.0kW (60Hz)
Max Speed (half load)	32.4 knots
Cruising Range (half load)	350 nm @ 27.5 knots

\*Optional items may be included in the drawing and are for reference only.

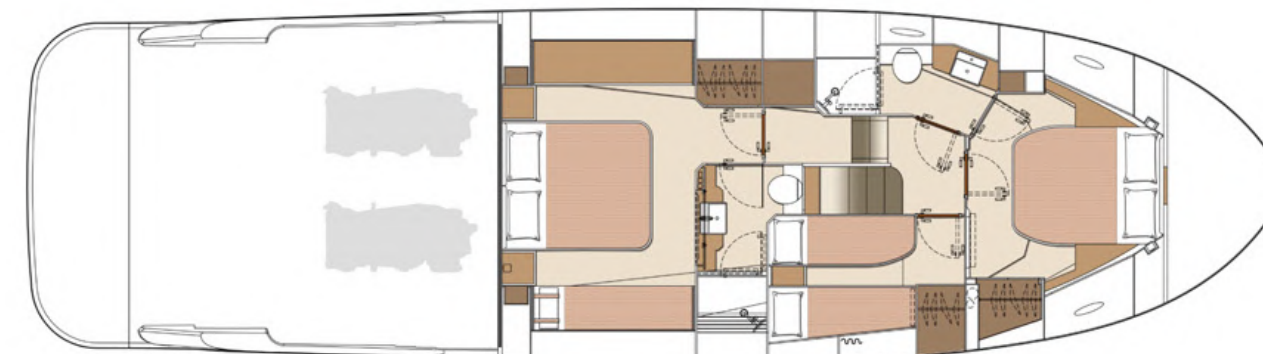
HORIZON | E SERIES



UPPER DECK



MAIN DECK



LOWER DECK





E56



HORIZON | E SERIES

WORLD CLASS YACHTS | E56





Multifunctional storage and a Hi/Lo hydraulic platform are located on the aft deck.







A large side window maximizes natural light and complements the custom interior LEDs.





# E56

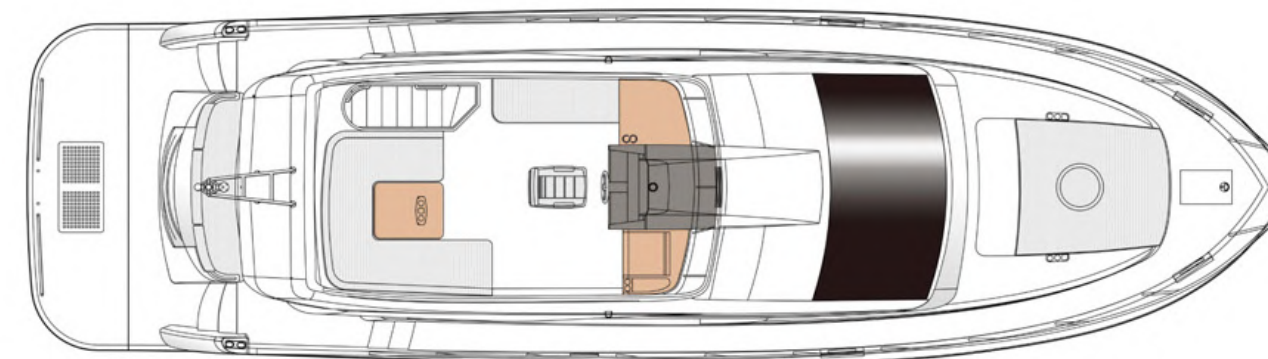
## Technical Specifications



L.O.A	56'-0" (17.07m)
L.W.L	44'-10" (13.67m)
Beam	15'-9" (4.80m)
Draft	4'-5" (1.35m)
Displacement (half load)	58,422 lbs (26.50 tons)
Fuel	660 US gals (2,500 ltrs)
Fresh Water	160 US gals (600 ltrs)
Engines	Twin Volvo Penta IPS 950 (725hp)
Generator	Onan 13.5kW (50Hz) or Onan 17.0kW (60Hz)
Max Speed (half load)	33.7 knots
Cruising Range (half load)	300 nm @ 28.6 knots

\*Optional items may be included in the drawing and are for reference only.

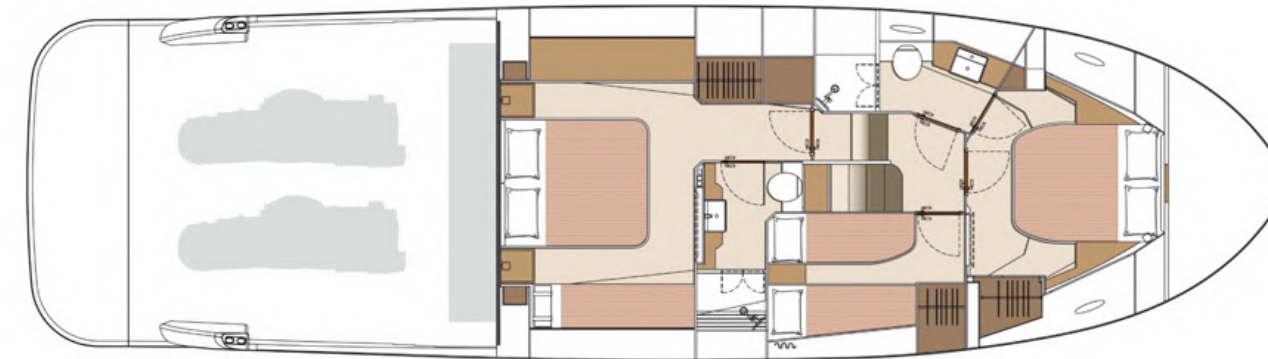
HORIZON | E SERIES



UPPER DECK



MAIN DECK



LOWER DECK



# Horizon Core Values

**1** and only SYBAss member in Asia

**30+** years as a luxury yacht builder

Top **10 largest** & top **5 custom** yacht builder in the world

**13**th consecutive winner of Asia Boating Awards

**790** luxury yachts delivered worldwide

**8** yacht series with over **25** models

Sales and support in **5** continents

**800** professional yacht builders, including **300+** master craftsmen

Over **1,130,000** sq ft area, with **4** specialized shipyards for building our yachts





# Horizon Achievements

**SYBAss**  
SUPERYACHT BUILDERS ASSOCIATION

## SUPERYACHT BUILDERS ASSOCIATION

Since 1987, Horizon Group has delivered over 100 superyachts, which is the largest number delivered by any yacht builder in Asia. We joined SYBAss in 2010 and remain the only qualified luxury yacht builder and SYBAss member in the Far East to date. Horizon's superior yacht quality and advanced build technology is highly competitive with other top superyacht builders around the globe, and we also actively promote the superyacht lifestyle and experience as members of SYBAss.

[www.sybass.org](http://www.sybass.org)



## THE WORLD SUPERYACHT AWARDS

The World Superyacht Awards is the most prestigious awards programs for superyachts over 100 feet. Each year, a panel of judges selects the best 100+ superyachts, within various categories, that have been delivered to their owners within the past year. In 2009 the Horizon P130 "Miss Rose" was selected as a Finalist, and in 2010 the Horizon RP120 "Espresso" was Finalist; the Horizon RP120 "Muses" and P136 "Angara" were both 2012 Finalists. The Horizon RP110 "Esther 7" was a Finalist in the 2015 World Superyacht Awards.

[www.worldsuperyachtawards.com](http://www.worldsuperyachtawards.com)



## ASIA BOATING AWARDS

Founded in 2005, the Asia Boating Awards recognizes and selects the best performing shipyards and their outstanding achievements within the Asian yachting industry for the past year. Horizon is the only Taiwan yacht builder with an unbreakable record of 12 consecutive "Best Asian Yacht Builder" awards since 2006. Horizon Group CEO John Lu received the "Personality of the Year" award in 2015. In 2018, the Horizon FD85 was awarded "Best Asian Built Yacht". The Asia Boating Awards is an annual event organized by famous Asian yacht magazines Asia Pacific Boating and China Boating.

[www.asiaboatingawards.com](http://www.asiaboatingawards.com)



## TAIWAN EXCELLENCE

Taiwan Excellence is the premier award for "made in Taiwan" products and presented only to revolutionary high quality and high value products. The Gold Award – the highest honor that a company can achieve within Taiwan Excellence – is awarded to the top 10 finalists out of 1,000 Taiwan products reviewed by expert judges. Horizon received our first Taiwan Excellence award in 2010, and we have won an award each subsequent year for the outstanding features in and performance of our luxury yachts. In 2018, the Horizon FD85 was awarded our eighth Taiwan Excellence award trophy.

[www.taiwanexcellence.org](http://www.taiwanexcellence.org)





*You dream, we deliver*



EP SERIES  
69-150ft



P SERIES  
110-130ft



RP SERIES  
97-120ft



FD SERIES  
77-125ft



E SERIES  
56-98ft



V SERIES  
68-80ft



PC SERIES  
52-74ft



CC SERIES  
80ft above

*8 series, over 25 models*





## Define Your Horizon

All specifications and information inside are subject to change.