

HORIZON · RP series



Define Your Horizon

[www.horizonyacht.com](http://www.horizonyacht.com)

RP  
97ft-120ft

## Define Your Horizon

Our commitment



THE  
SUPERYACHT  
Experience  
BROUGHT TO YOU BY

VITTERS  
SHIPYARD

TRINITY  
YACHTS

SANLORENZO

ROYAL HUISMAN

PROTEGAN TURQUOSE



PERINI NAVI GROUP

PENDENNIS  
WORLDWIDE YACHTS LTD.

oceAnco

MONDO  
MARINE

LÜRSSEN

ISV

HORIZON

HJB  
HOLLAND JACHTBOUW



HANSEATIC MARINE

FINCANTIERI  
YACHTS

FEADSHIP  
ROYAL CENTER SHIPYARD

DELTA

CRN

BURGER

Benetti  
ITALIAN EXCELLENCE SINCE 1911



AMELS  
THE ART OF YACHT BUILDING

LABEYRIE & BASSUSSEN

Horizon is honored to be a part of “The Superyacht Experience” and is pleased to have contributed to SYBass’ mission since 2013.

SYBAss  
MEMBER

Horizon Group is the first & only member of SYBAss from Asia.



## Commitment Redefined.

Whether your boating style is adventurous and sporty, or laid-back and luxurious—with a track record of over 700 unique, superior and reliable yachts delivered to date—Horizon will design the yacht that is right for you.

**1** And only SYBAss member in Asia

**150** Megayachts & **570** Motoryachts delivered

**5**<sup>th</sup> Largest custom luxury yacht builder in the world

**27** Years as a luxury yacht builder

**7** Yacht series with **25** models

**1000** Employees

**5** Continents serviced

**4** Shipyards over **110,000** sqm. of land





Horizon Fleet

E series

EP series

P series

**RP series**

PC series

SC series

T series

V series







Open Air cruising  
Elegant & Sophisticated  
Practical beyond compare  
Performance meets Style



# RP120





















RP120



L.O.A	36.58M (120'-0")
L.W.L	30.11M (98'-9")
Beam	7.98M (26'-2")
Draft	2.34M (7'-8")
Fuel	30,000L (8,000 Gal)
Fresh Water	3,000L (800 Gal)
Displacement (light)	160T (352,700 Lbs)
Engines	Twin CAT C32A @ 1800HP Twin MAN V12 @ 1800HP
Generator	Twin ONAN 65KW(50HZ) Twin ONAN 65KW(60HZ)

\*Optional items may be included in the drawing and are for reference only.





# RP110





















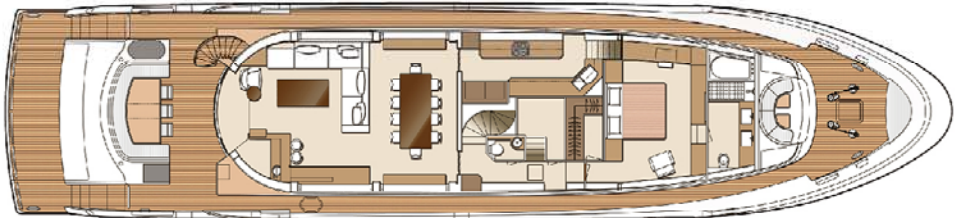






L.O.A	33.53M (110'-0")
L.W.L	27.42M (89'-11")
Beam	7.62M (25'-0")
Draft	1.83M (6'-0")
Fuel	21,000L (5,550 Gal)
Fresh Water	3,100L (800 Gal)
Displacement (light)	120T (264,000 Lbs)
Engines	Twin CAT C32A @ 1800HP Twin MAN V12 @ 1800HP
Generator	Twin ONAN 50KW( 50Hz) Twin ONAN 55KW(60HZ)

\*Optional items may be included in the drawing and are for reference only.





# RP97

















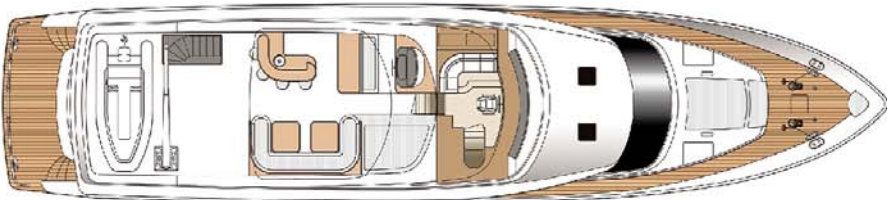


RP97



L.O.A	29.57M (97'-0")
L.W.L	26.30M (86'-3")
Beam	6.55M (21'-6")
Draft	1.83M (6'-0")
Fuel	11,300L (3,000 Gal)
Fresh Water	1,900L (500 Gal)
Displacement (light)	88T (194,000 Lbs)
Engines	Twin CAT C32A @ 1600HP Twin MAN V12 @ 1550HP
Generator	Twin ONAN 27KW (50HZ) Twin ONAN 32KW (60HZ)

\*Optional items may be included in the drawing and are for reference only.





New Project  
**RP102**









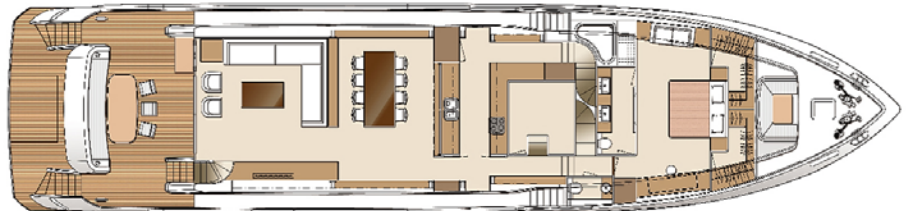
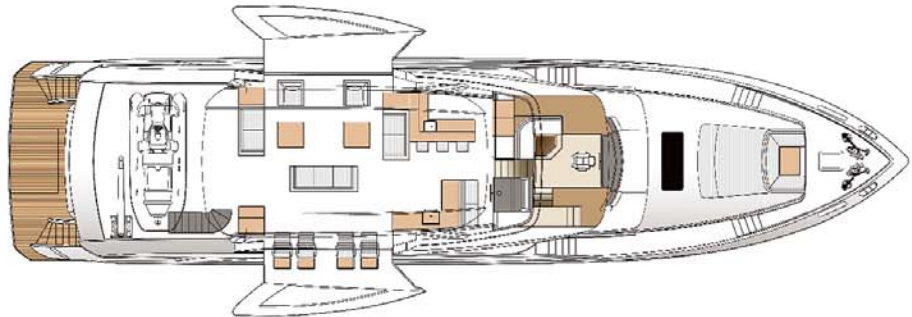


RP102



L.O.A	31.82M (104'-5")
L.W.L	29.55M (96'-11")
Beam	7.37M (24'-2")
Draft	1.83M (6'-0")
Fuel	15,140L (4,000 Gal)
Fresh Water	2,270L (600 Gal)
Displacement (light)	110T (242,500 Lbs)
Engines	Twin CAT C32A 1600HP Twin MAN V12 @ 1550HP
Generator	Twin ONAN 40KW( 50Hz) Twin ONAN 40KW(60HZ)

\*Optional items may be included in the drawing and are for reference only.





We aim high and reach higher.  
We welcome challenges.  
We value integrity.  
We treasure your dream.

- HORIZON





## Exceeding Your Expectations

- Dedication to reducing the environmental impact of yacht construction
- Minimizing VOC's and maximizing strength with the patented SCRIMP 3D infusion process
- Precise, accurate and symmetrical tooling with a 90ft long 5 axis CNC milling machine
- Building with a pre-approved structural analysis conducted by DNV to comply with their High Speed Light Craft directive
- Standard fire detection and suppression systems from every yacht
- Defined vibration and harmonics analysis to meet strict ISO 6954 standards
- Exceeding ISO 12217 stability standards with every yacht
- Collision bulkheads and escape hatches in every yacht
- Rigorous testing of components, including sheer and tensile strength of materials, laser alignment, and pressure testing for all fuel, water and holding tanks
- Comprehensive sea trials and testing procedures are completed prior to owner delivery
- Quality, skilled craftsmen and women are dedicated to defining your dreams
  - Hundreds of workers with more than 25 years of experience
  - 70 fulltime front-line engineers with college degrees, 10 hold Bachelor of Naval Architecture degrees
  - 30 staffs with Master's degrees in Naval Architecture
  - An in-house design team helping each owner detail their new Horizon







## Horizon Achievements

### SYBAss

#### SUPERYACHT BUILDERS ASSOCIATION

SYBAss unites and represents the world's leading superyacht builders and emphasizes the unique values of each member. Horizon is the only qualified megayacht builder in the Far East to have become a member of SYBAss to date. [www.sybass.org](http://www.sybass.org)



#### THE WORLD SUPERYACHT AWARDS

The World Superyacht Awards—dubbed the Oscars of the superyacht world—recognize the finest new superyacht builds delivered to their owners. In 2009, Horizon's P130 "Miss Rose" was selected as a Finalist. In 2010, Horizon RP120 "Espresso" was Finalist and in 2012, the Horizon RP120 "Muses" and P136 "Angara" were both Finalists. [www.worldsuperyachtawards.com](http://www.worldsuperyachtawards.com)



#### ASIA BOATING AWARDS

The aim of the Asia Boating Awards is to recognize the best of the maritime industry in Asia. Horizon has been named "Best-Asian Motor Yacht Builder" every year since 2006. [www.asiaboatingawards.com](http://www.asiaboatingawards.com)



#### TAIWAN EXCELLENCE

Taiwan Excellence is the greatest accolade for products made in Taiwan and is presented to products that are revolutionary and of high quality and high value. From 2010 to 2011, Horizon's P130 tri-deck superyacht, E88 motoryacht, and SC46 solar yacht were awarded the "Taiwan Excellence" Awards for their outstanding performance and features. In 2013, the new Horizon RP110 raised pilothouse superyacht was awarded for her innovative interior and exterior design; this year, the "Horizon Polaris" and E56 motoryacht have each been presented with the award, and "Horizon Polaris" is also awarded for the Taiwan Excellence Gold Award, the highest award given among all products.

[www.brandingtaiwan.org/  
TaiwanExcellence/en/index.aspx](http://www.brandingtaiwan.org/TaiwanExcellence/en/index.aspx)



Your contact person

Define Your Horizon



The illustration and specification stated herewith the publication are only samples based on standard models and are subject to change if necessary. For more details, please contact with the authorized Horizon dealers.



