

HORIZON - V-series



Define Your Horizon

[www.horizonyacht.com](http://www.horizonyacht.com)

V  
72ft-80ft

Define Your Horizon

Our commitment



# the SUPERYACHT Experience

BROUGHT TO YOU BY

VITTERS  
SHIPYARD

TRINITY  
YACHTS

SANLORENZO

ROYAL HUISMAN

PROTECTOR TURQUOSE



PERINI NAVI GROUP

PENDENNIS

oceAnco

MONDO  
MARINE

LÜRSSEN

ISV

  
HORIZON

HJB  
HOLLAND JACHTBOUW

DELTA

HANSCATIC MARINE

FINCANTIERI  
YACHTS

FEADSHIP

DELTA

CRN

BURGER

Benetti

AMELS

THE ART OF YACHT BUILDING

JABEYNG & RASMUSSEN

Horizon is honored to be a part of “The Superyacht Experience” and is pleased to have contributed to SYBass’ mission since 2013.

SYBass

Horizon Group is the first & only member of SYBass from Asia.



## Commitment Redefined.

Whether your boating style is adventurous and sporty, or laid-back and luxurious—with a track record of over 700 unique, superior and reliable yachts delivered to date—Horizon will design the yacht that is right for you.

1 And only SYBass member in Asia

150 Megayachts & 570 Motoryachts delivered

5<sup>th</sup> Largest custom luxury yacht builder in the world

27 Years as a luxury yacht builder

7 Yacht series with 25 models

1000 Employees

5 Continents serviced

4 Shipyards over 110,000 sqm. of land





Horizon Fleet

E series

EP series

P series

RP series

PC series

SC series

T series

**V series**







Traditional luxury  
Redefining Family values  
Eco-friendly meets enjoyment  
Classically styled



# V80





















DEFINE YOUR HORIZON



HORIZON | **V** SERIES





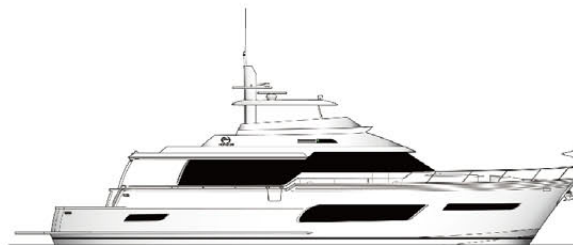






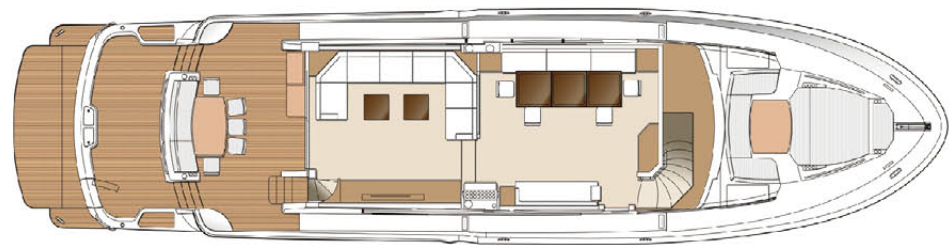
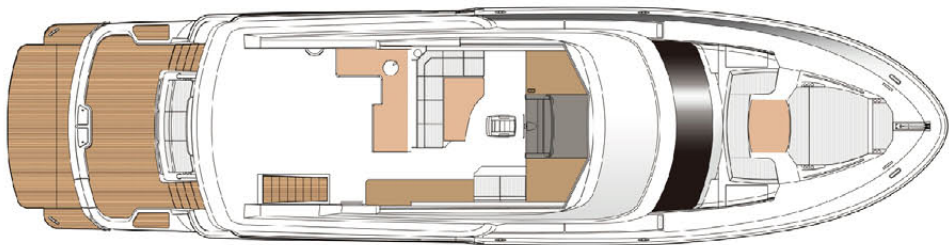


V8o



|                      |  |
|----------------------|--|
| L.O.A                | 24.90M (81'-11 3/4")                             |
| L.W.L                | 20.90M (68'-10 1/2")                             |
| Beam                 | 6.25M (20'-6")                                   |
| Draft                | 1.75M (5'-19")                                   |
| Fuel                 | 5,299L (1,400 Gal)                               |
| Fresh Water          | 1,135L (300 Gal)                                 |
| Displacement (light) | 62T (136,687 Lbs)                                |
| Engines              | Twin CAT C18 ACERT-1150MHP                       |
| Generator            | ONAN 22.5KW+13.5KW(50Hz)<br>ONAN 29KW+17KW(60Hz) |

\*Optional items may be included in the drawing and are for reference only.



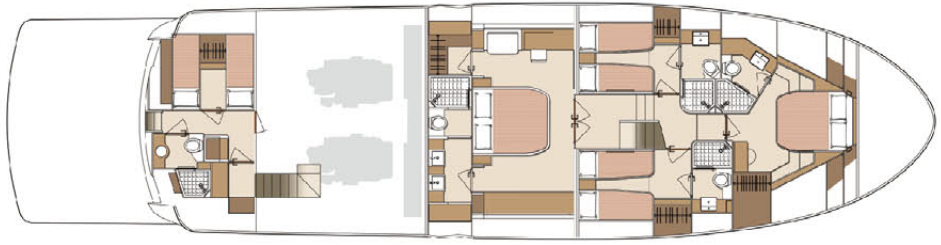
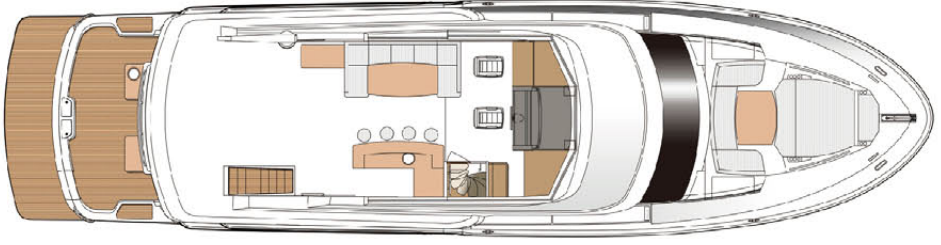
V8o



\* Optional Four Stateroom Version

|                      |  |
|----------------------|--|
| L.O.A                | 24.90M (81'-11 3/4")                             |
| L.W.L                | 20.90M (68'-10 1/2")                             |
| Beam                 | 6.25M (20'-6")                                   |
| Draft                | 1.75M (5'-19")                                   |
| Fuel                 | 5,299L (1,400 Gal)                               |
| Fresh Water          | 1,135L (300 Gal)                                 |
| Displacement (light) | 62T (136,687 Lbs)                                |
| Engines              | Twin CAT C18 ACERT-1150MHP                       |
| Generator            | ONAN 22.5KW+13.5KW(50Hz)<br>ONAN 29KW+17KW(60Hz) |

\*Optional items may be included in the drawing and are for reference only.





V72















































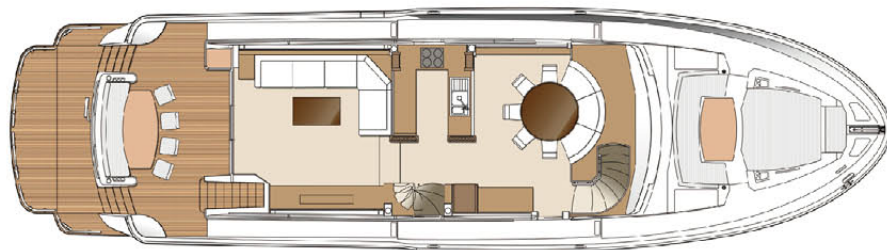
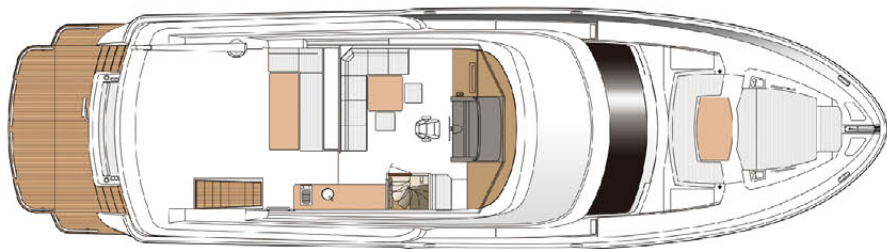


V72



|                      |  |
|----------------------|--|
| L.O.A                | 22.85M (74'-11 1/2")                             |
| L.W.L                | 19.18M (62'-11")                                 |
| Beam                 | 6.25M (20'-6")                                   |
| Draft                | 1.55M (5'-2")                                    |
| Fuel                 | 5,299L (1,400 Gal)                               |
| Fresh Water          | 1,135L (300 Gal)                                 |
| Displacement (light) | 51T (121,436 Lbs)                                |
| Engines              | Twin CAT C18 ACERT-1150MHP                       |
| Generator            | ONAN 22.5KW+13.5KW(50Hz)<br>ONAN 29KW+17KW(60Hz) |

\*Optional items may be included in the drawing and are for reference only.

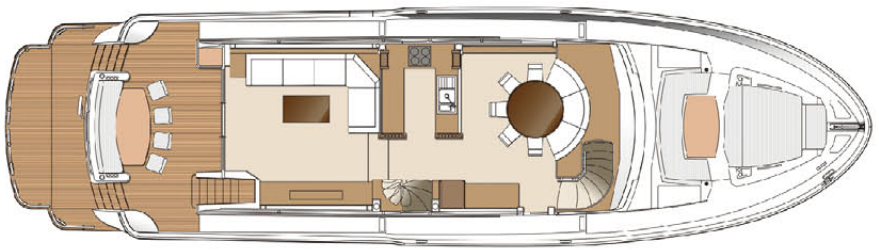
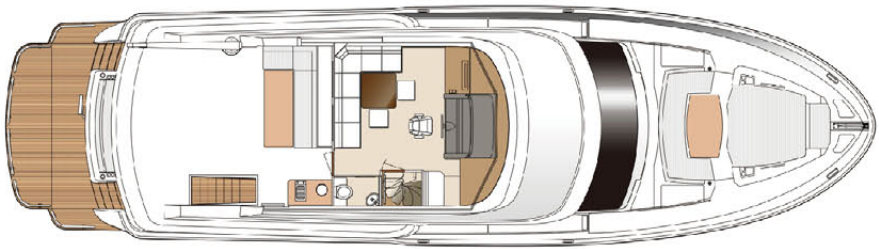


V72



|                      |  |
|----------------------|--|
| L.O.A                | 22.85M (74'-11 1/2")                             |
| L.W.L                | 19.18M (62'-11")                                 |
| Beam                 | 6.25M (20'-6")                                   |
| Draft                | 1.55M (5'-2")                                    |
| Fuel                 | 5,299L (1,400 Gal)                               |
| Fresh Water          | 1,135L (300 Gal)                                 |
| Displacement (light) | 51T (121,436 Lbs)                                |
| Engines              | Twin CAT C18 ACERT-1150MHP                       |
| Generator            | ONAN 22.5KW+13.5KW(50Hz)<br>ONAN 29KW+17KW(60Hz) |

\*Optional items may be included in the drawing and are for reference only.





We aim high and reach higher.  
We welcome challenges.  
We value integrity.  
We treasure your dream.

- HORIZON





## Exceeding Your Expectations

- Dedication to reducing the environmental impact of yacht construction
- Minimizing VOC's and maximizing strength with the patented SCRIMP 3D infusion process
- Precise, accurate and symmetrical tooling with a 90ft long 5 axis CNC milling machine
- Building with a pre-approved structural analysis conducted by DNV to comply with their High Speed Light Craft directive
- Standard fire detection and suppression systems from every yacht
- Defined vibration and harmonics analysis to meet strict ISO 6954 standards
- Exceeding ISO 12217 stability standards with every yacht
- Collision bulkheads and escape hatches in every yacht
- Rigorous testing of components, including sheer and tensile strength of materials, laser alignment, and pressure testing for all fuel, water and holding tanks
- Comprehensive sea trials and testing procedures are completed prior to owner delivery
- Quality, skilled craftsmen and women are dedicated to defining your dreams
  - Hundreds of workers with more than 25 years of experience
  - 70 fulltime front-line engineers with college degrees, 10 hold Bachelor of Naval Architecture degrees
  - 30 staffs with Master's degrees in Naval Architecture
  - An in-house design team helping each owner detail their new Horizon







## Horizon Achievements

**SYBAss**  
SUPERYACHT BUILDERS ASSOCIATION

SYBAss unites and represents the world's leading superyacht builders and emphasizes the unique values of each member. Horizon is the only qualified megayacht builder in the Far East to have become a member of SYBAss to date. [www.sybass.org](http://www.sybass.org)

*The World*  
Superyacht Awards

**THE WORLD SUPERYACHT AWARDS**  
The World Superyacht Awards—dubbed the Oscars of the superyacht world—recognize the finest new superyacht builds delivered to their owners. In 2009, Horizon's P130 "Miss Rose" was selected as a Finalist. In 2010, Horizon RP120 "Espresso" was Finalist and in 2012, the Horizon RP120 "Muses" and P136 "Angara" were both Finalists. [www.worldsuperyachtawards.com](http://www.worldsuperyachtawards.com)

  
ASIA BOATING AWARDS

**ASIA BOATING AWARDS**  
The aim of the Asia Boating Awards is to recognize the best of the maritime industry in Asia. Horizon has been named "Best-Asian Motor Yacht Builder" every year since 2006. [www.asiaboatingawards.com](http://www.asiaboatingawards.com)

 **TAIWAN EXCELLENCE GOLD AWARD 2014**  **TAIWAN EXCELLENCE**

**TAIWAN EXCELLENCE**  
Taiwan Excellence is the greatest accolade for products made in Taiwan and is presented to products that are revolutionary and of high quality and high value. From 2010 to 2011, Horizon's P130 tri-deck superyacht, E88 motoryacht, and SC46 solar yacht were awarded the "Taiwan Excellence" Awards for their outstanding performance and features. In 2013, the new Horizon RP110 raised pilothouse superyacht was awarded for her innovative interior and exterior design; this year, the "Horizon Polaris" and E56 motoryacht have each been presented with the award, and "Horizon Polaris" is also awarded for the Taiwan Excellence Gold Award, the highest award given among all products. [www.brandingtaiwan.org/TaiwanExcellence/en/index.aspx](http://www.brandingtaiwan.org/TaiwanExcellence/en/index.aspx)



Your contact person

Define Your Horizon



The illustration and specification stated herewith the publication are only samples based on standard models and are subject to change if necessary. For more details, please contact with the authorized Horizon dealers.



