



Define Your Horizon

www.horizonyacht.com

HORIZON V68



V68



V68

Superyacht attitude

Superyacht attitude
superyacht attitude

V68



HORIZON V68

Superyacht attitude

Created in collaboration with world-renowned designer Jonathan Quinn Barnett (JQB), the new V68 is the third model in Horizon's V series, which includes the V72 and V80 motor yachts.

The V68 is a concept developed in response to one question: What is the largest vessel two people, or perhaps a small family, could use to comfortably and safely discover the world of yachting?

Combining the experience of our worldwide sales organizations with 30 years of Horizon's custom yacht building, we have tailored the V68 to very specific cruising objectives and parameters.





Introducing the NEW V68 MY

The 10th Anniversary of **V** series



The new V68 motor yacht is the newest third generation model in Horizon's V series, which includes the V72 MY and V74/V80 CMY

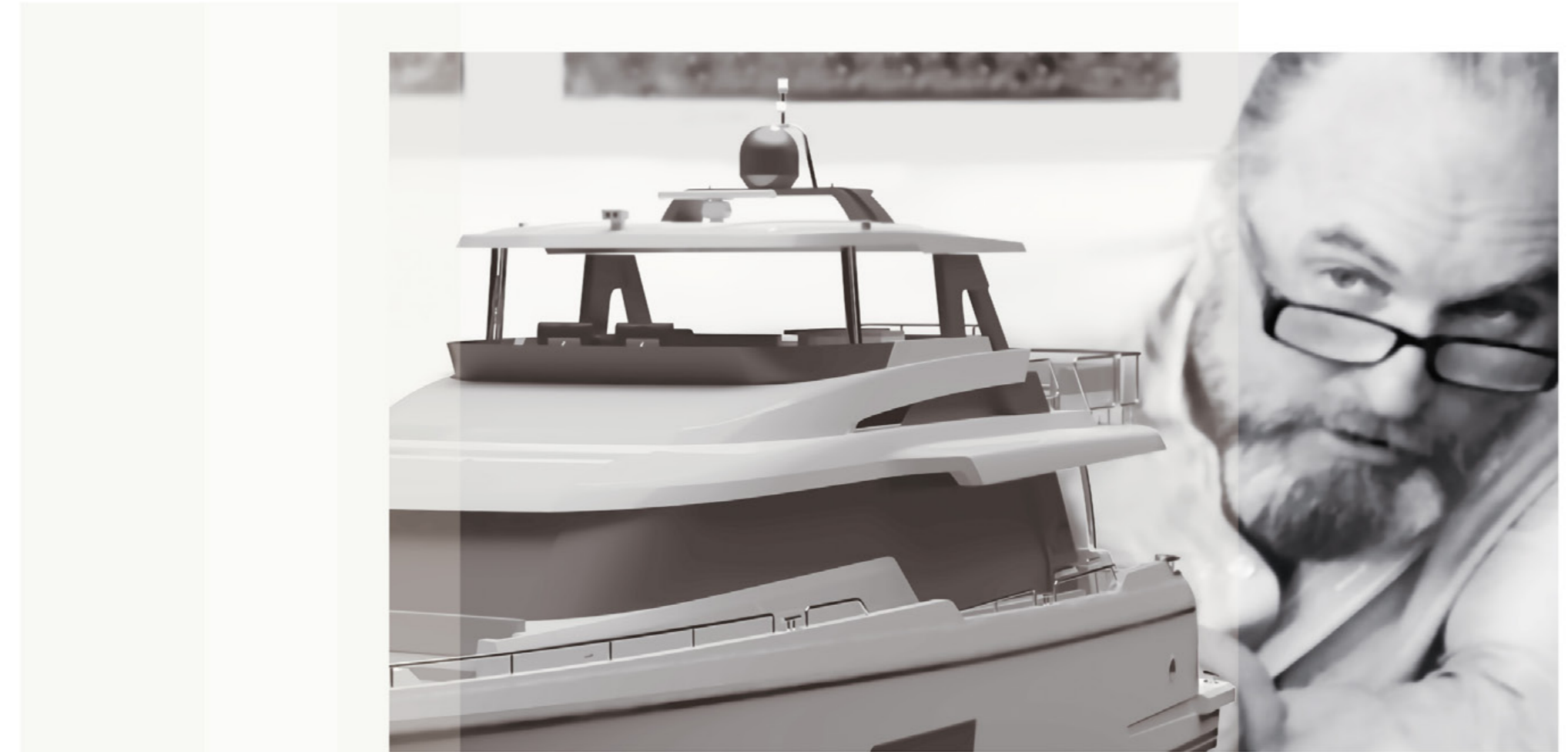


With a portfolio of successful international custom superyachts ranging from 100' (33 meters) to 412' (126 meters), JQB Ltd.'s studio designs in what he calls a "wholistic" manner.

"The outside and inside must feel as if they are one and of the same mind," says JQB, who sees himself as a conductor for a symphony of subcontractors and artisans.

With over 50 superyachts in the 100-ft plus size range sailing worldwide today, every original JQB design starts with hand sketching the client's initial ideas, which then get assimilated through computer-assisted plan generations and 3D modeling.

Experienced yacht owners will immediately recognize the flawless exterior contours and contemporary styling of the Horizon V68. This new vessel offers the convenience and versatility of its mini-yacht dimensions in combination with an extensive list of luxurious appointments and onboard amenities.

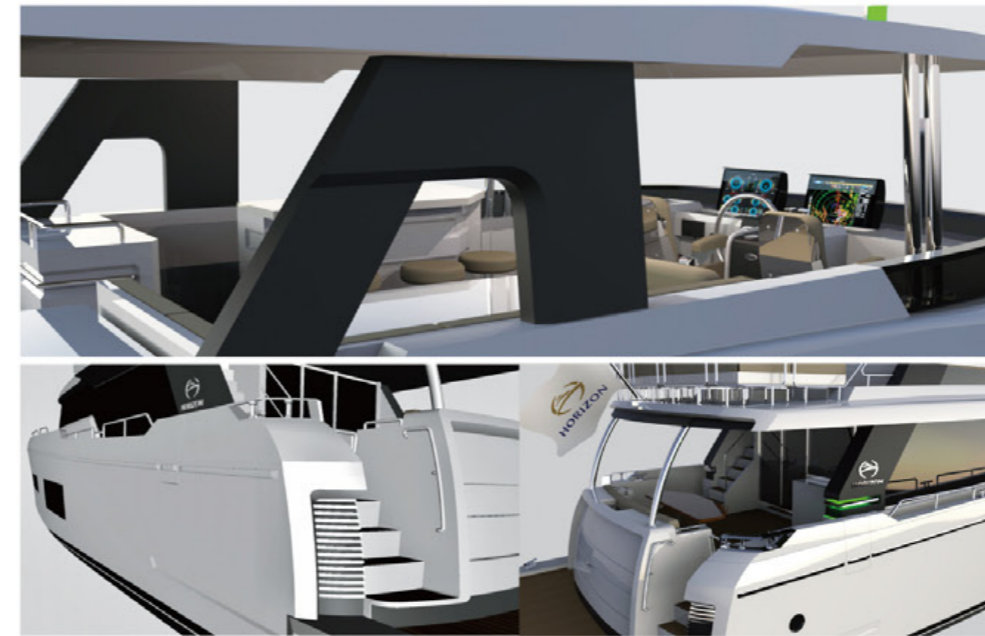


Horizon V68 by

JQB
DESIGN



“Honesty in design” is a phrase from JQB that means that there are no visual tricks employed to make the boat appear larger than it is. Instead, the V68 boasts copious large yacht features ingeniously fitted within a manageable owner/operator framework.



Hull

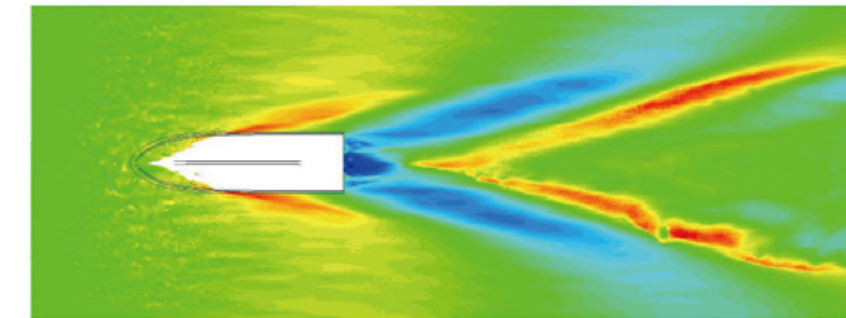
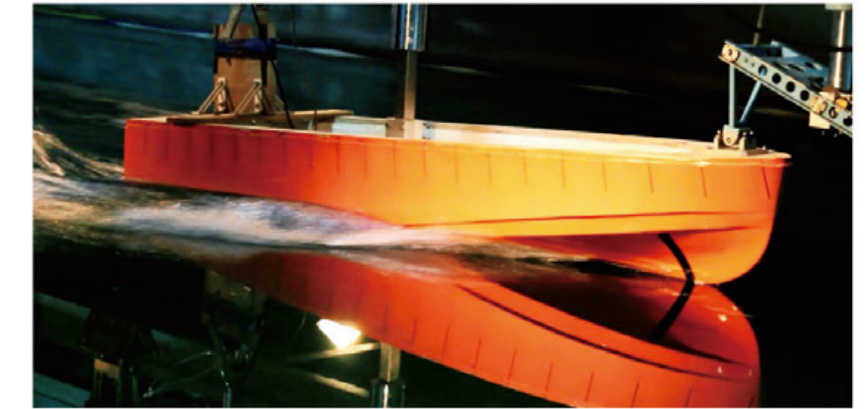
A more vertical bow, such as that seen on the Horizon V68, provides vessels a longer waterline for given overall length. This increases slenderness ratio (the ratio of beam to length) and thus allowing a generous 19'6" (6.00m) hull beam on a 68' vessel, making for greater stability and more comfortable motions at rest and underway; not to mention the positive impact on the interior spaces in terms of beam and added sole width up forward.

The hull was both tank tested and analysed with CFD (Computational Fluid Dynamics) to validate the concept and to refine the chines aft and spray rails forward, ensuring a clean bow wave and wake astern.

As a result, the V68 is not an average plumb bow vessel. More than merely extending the waterlines on an unchanged after-body, we carefully combined all of the hull features that work seamlessly with a well laid out interior, resulting in a "best in class" experience.

Christian Stimson FRINA, Auckland NZ

www.StimsonYachts.com





Safety is fashioned by a state-of-the-art hull design, strong construction, and equipment that is designed for all cruising occurrences.

Style should be defined by lifestyle. The interest in a more active lifestyle demands exterior and interior designs that interact and work seamlessly together.

Solid architecture occurs where forms are the result of honest shadows and shapes, rather than applied graphics or any “fashion” tricks.



B *eam*

19'-6" (6M)



The Horizon V68 has been planned throughout with large open spaces on her 19'6" beam, wide side decks and a voluminous interior that takes advantage of large windows in main deck and cabins and her 19'6" beam hull.



V68





ZONE Monitoring and Controls

C Zone displays are the interface between the C Zone network and the user. They offer full control of circuits as well as the ability to view important onboard system information, such as tank levels and power levels for both AC and DC supplies. C Zone will start and stop generators from its display and even mobile devices, where the C Zone wifi can also execute all the functions listed.

Designed with the user in mind, the easy-to-use display screens provide the control of all components directly at your fingertips

The interface displays various system monitoring and control screens. The 'Monitoring' screen includes the following data:

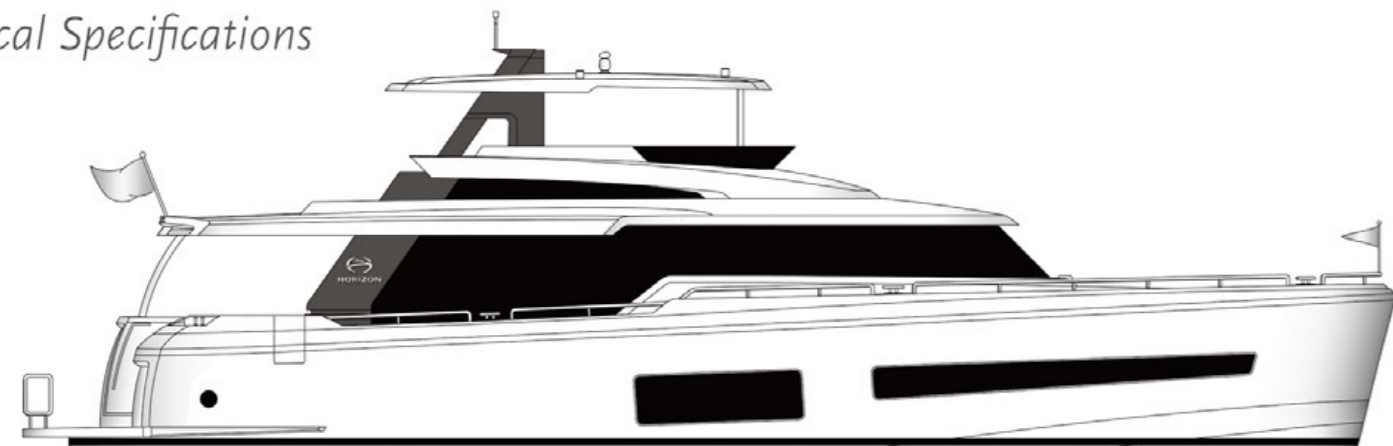
System	Value
FWD black water...	14%
FWD. FUEL tank...	88%
SERVICE BATT	96% 13.84V 0.0A
Shoer power L1	230V 6.5A 50Hz 2kW
PORT GEN	230V 13A 50Hz 3kW
STBD. GEN	230V 13A 50Hz 3kW
Light - Anchor	4.2A
Light - PORT NAV.	3.9A
Light - STBD. NAV.	2.2A
Light - STEAMING	2.2A
Light - Stern	2.2A

The 'Control' screen shows a grid of system status cards:

- Shore Power Full: 230v 13A, 50Hz 2kW
- House Battery: 13.87v -0.1A
- Fresh Water Tank: 54% 248L
- Oil Pressure: 12Hg
- Temperature: 28°C
- Generator Full: 230v 13A, 50Hz 2kW
- Courtesy Light
- Entertainment
- House Battery Switch
- Navigation Light
- Pressure Washer
- Start Battery Switch

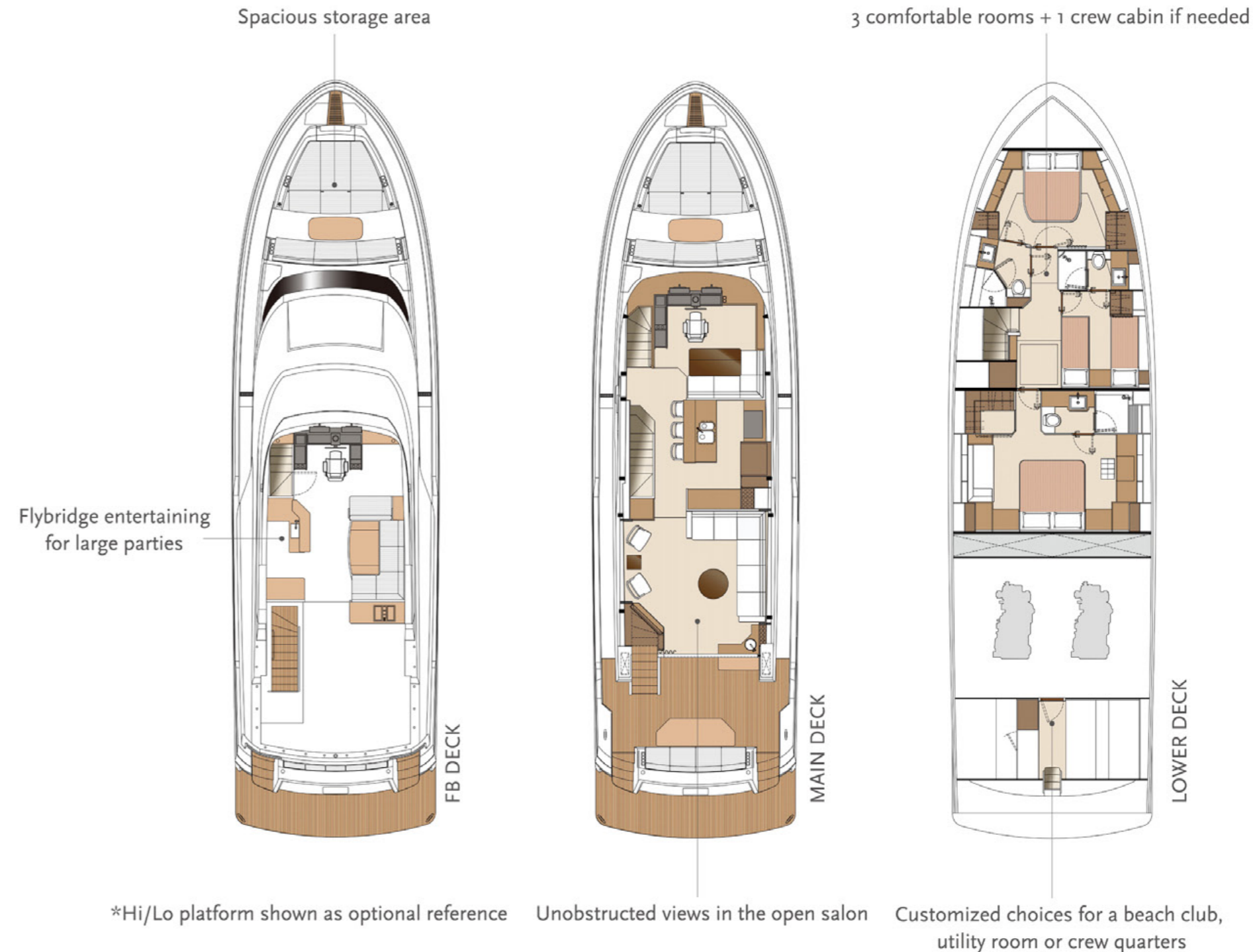
V68

Technical Specifications



L.O.A to hull	68'-5 5/8" (20.87 m)
L.O.A to Fixed Swim Platform	70'-10 1/4" (21.60 m)
L.W.L	66'-1 7/8" (20.16 m)
Beam	19'-6" (6.00 m)
Draft (prop. tip clearance, half load)	5'-6 3/8" (1.69 m)
Displacement (half approx.)	109,635 lbs (49.73 tons)
Fuel capacity	1200 US gal (4,542 ltrs)
Fresh water capacity	300 US gal (1,136 ltrs)
Engine	Twin Caterpillar C18 ACERT-1136hp
Generator	Onan 17.5kW (50Hz) or Onan 21.5kW (60Hz)
Max speed (estimation)	24.3 knots
Cruising Range	289.8 nm 20.7 knots

* Optional items may be included in the drawing and are for reference only



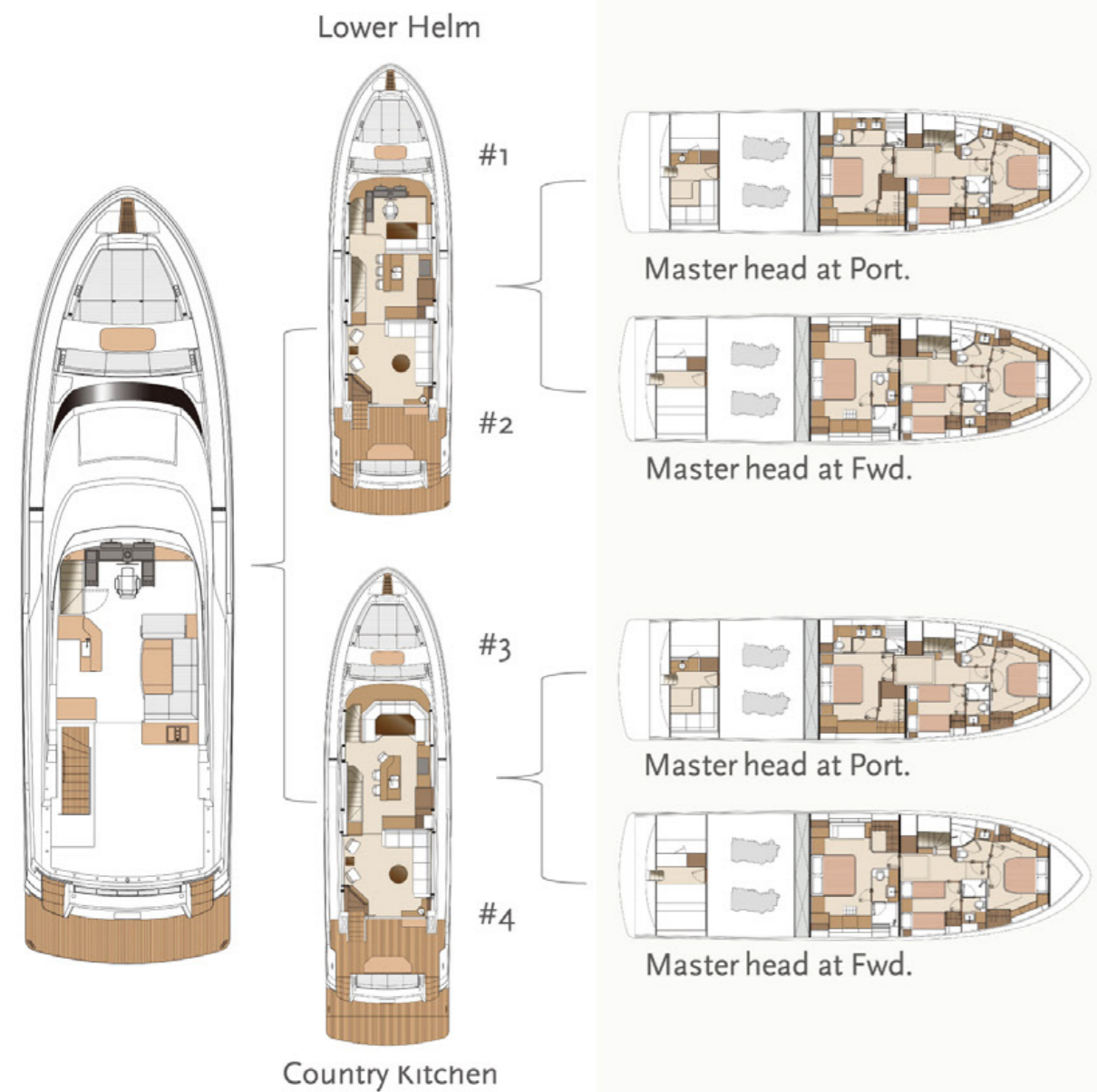


Build your own V68 in 8 different layouts

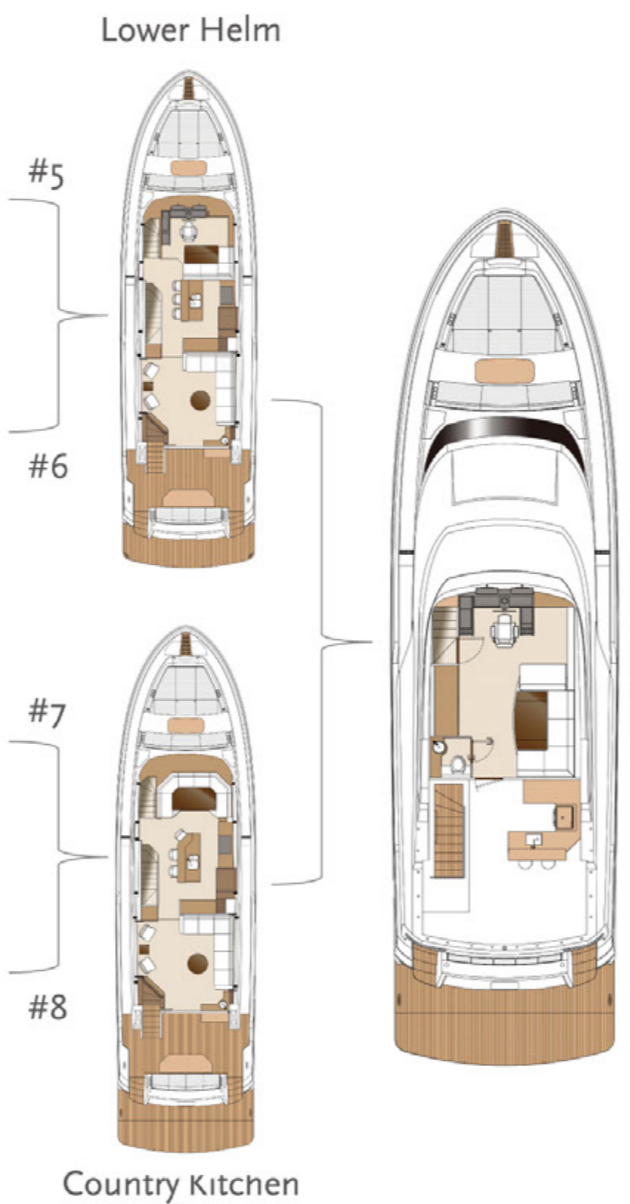


Unique to an entry-level motor yacht such as the V68 is the option for customization. Owners are given the choice of at least two major layout options for each deck.

Open Bridge

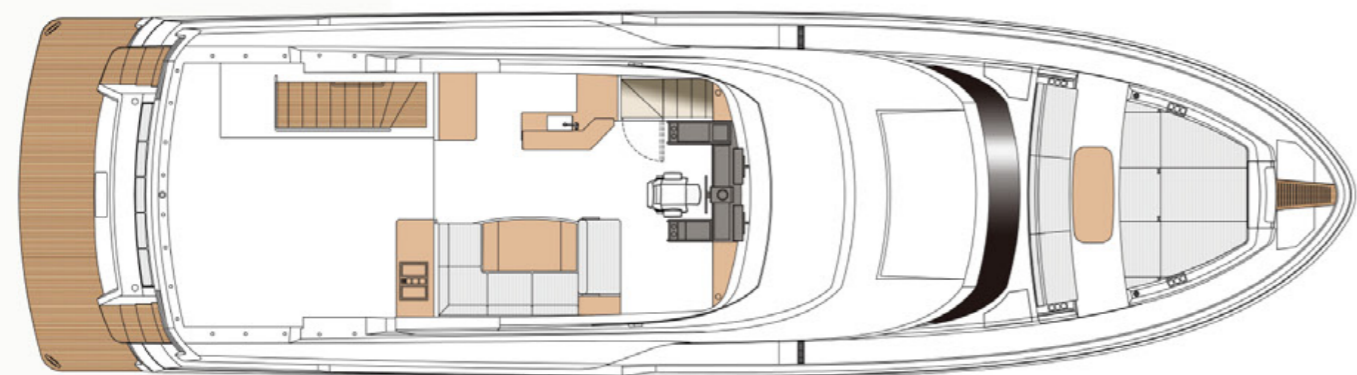


Skylounge

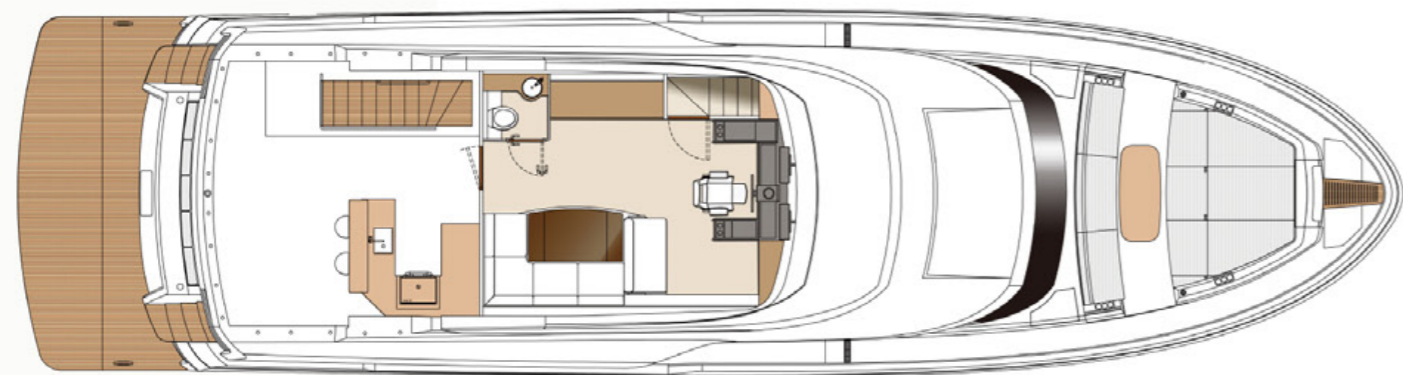




uxurious Flybridge Deck



Open Bridge



Skylounge

20^{plus} Guest Capacity

A modern and convenient helm, with two 22" touch screens, controlled by the GARMIN GRID is located near your hand when sitting at the helm chair. For entertaining, there is a bar with dinette seating for 8 under the hardtop, and the flybridge can be enclosed with a day head added if desired. Removable seating with table and chairs is an option for the boat deck to entertain more than 20 guests.

Horizon has also managed to offer a dayhead for the open flybridge as a great convenience.





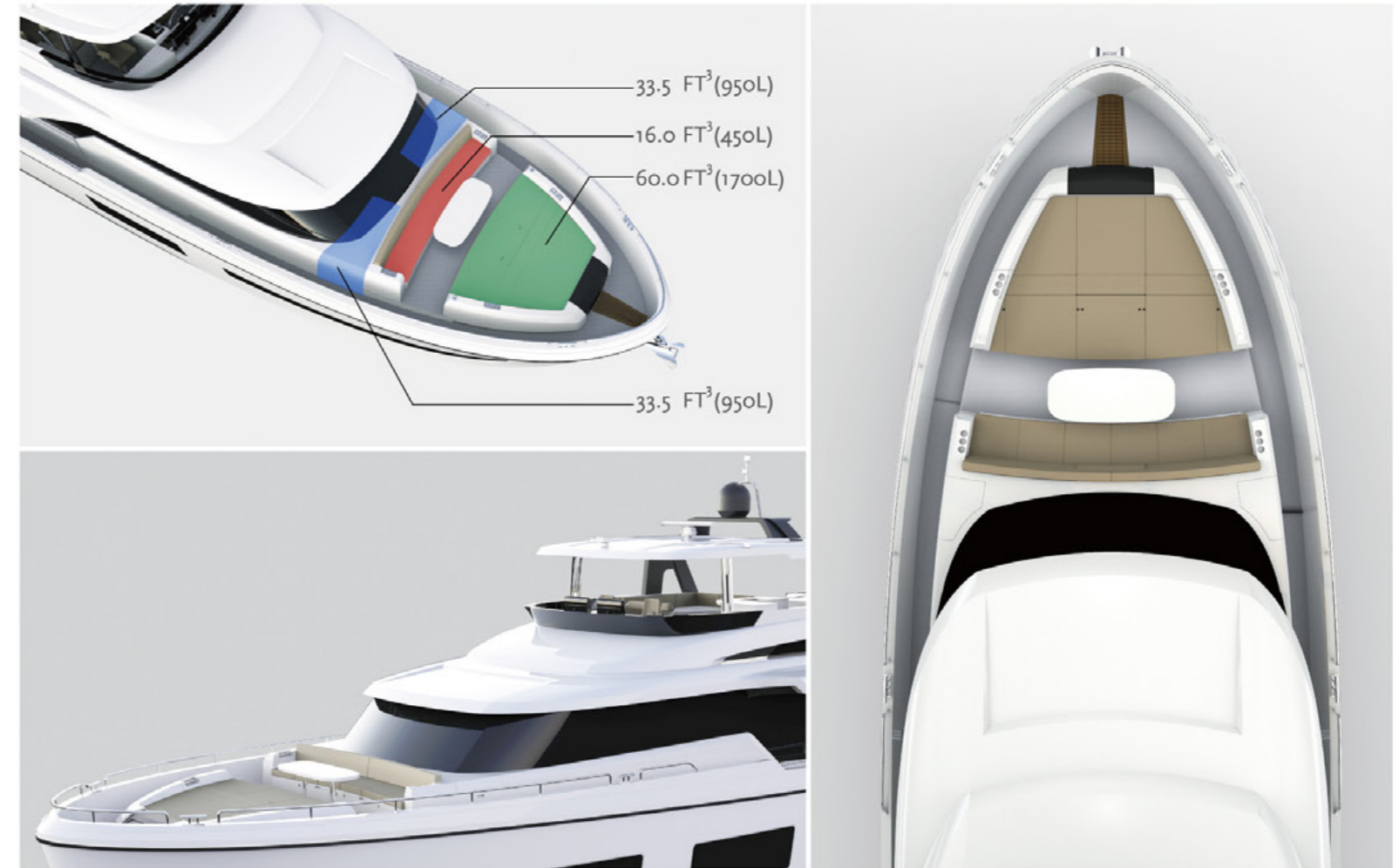
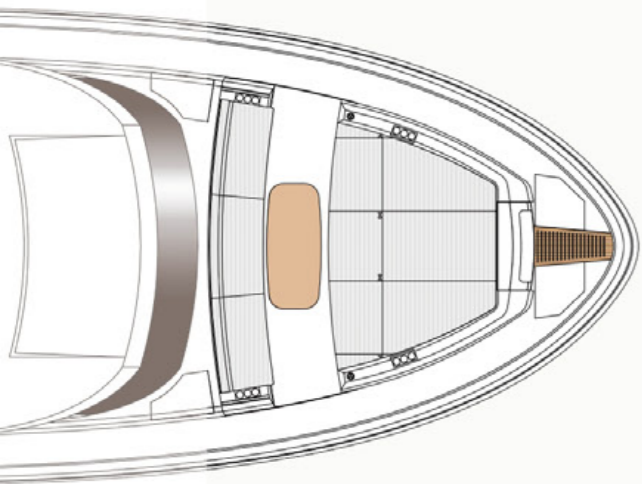


Forward Deck

143 FT³
(4,050 L)

A flat deck with a hidden windlass and chain is offered on the forward deck, with the cleats on the rail for the comfort of guests.

- Comfortable seating and dining for eight guests
- Removable sun awning available
- Huge sunpad area forward
- Storage space (total 143 cu FT³) in 4 areas
- Very deep bulkwalk to make sure all are safe







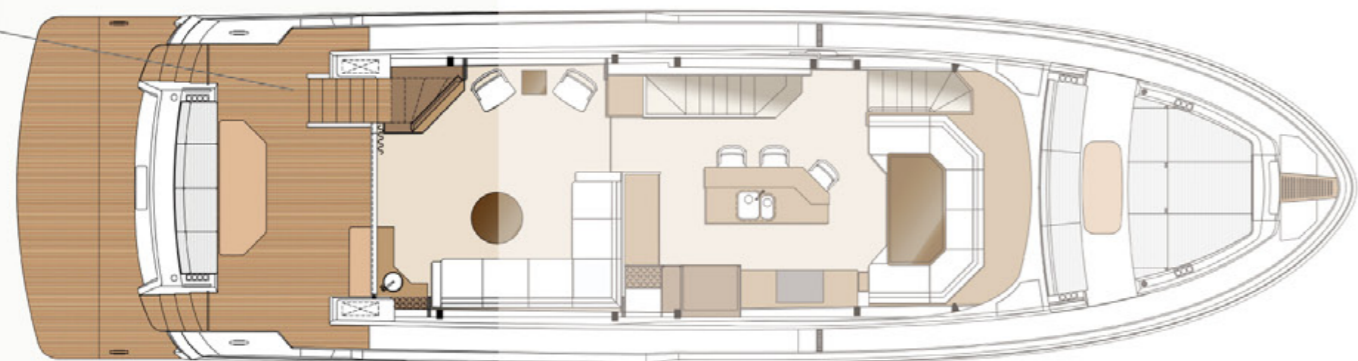
ft Deck

10'-8"

The V68 offers tremendous volume, with entertaining space and accommodations that you would find on a 72' to 75' yacht.

- 10'-8" of space between salon door and the back of the seating
- A wide seat and large table accommodate dining for eight guests
- Interior bar serves the salon and aft deck equally
- Convenient side boarding gates P&S
- Comfortable stairway from aft deck to flybridge instead of a ladder
- Access to crew area from the swim platform or aft deck
- A hi/lo swim platform with 1,500 lb. capacity is available as an option

Storage space 7FT³ (200L) P&S



Main Deck

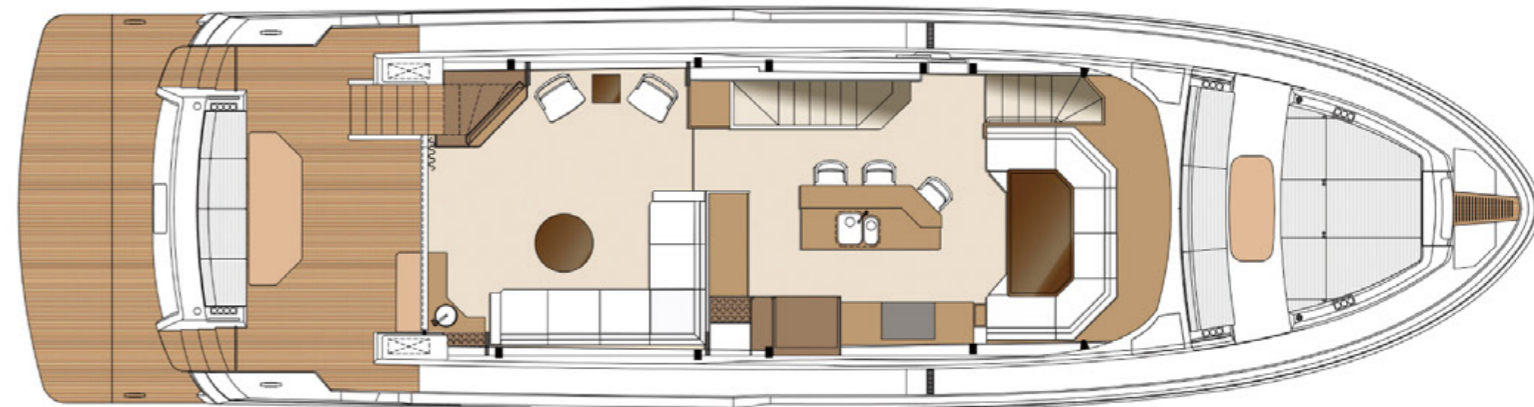
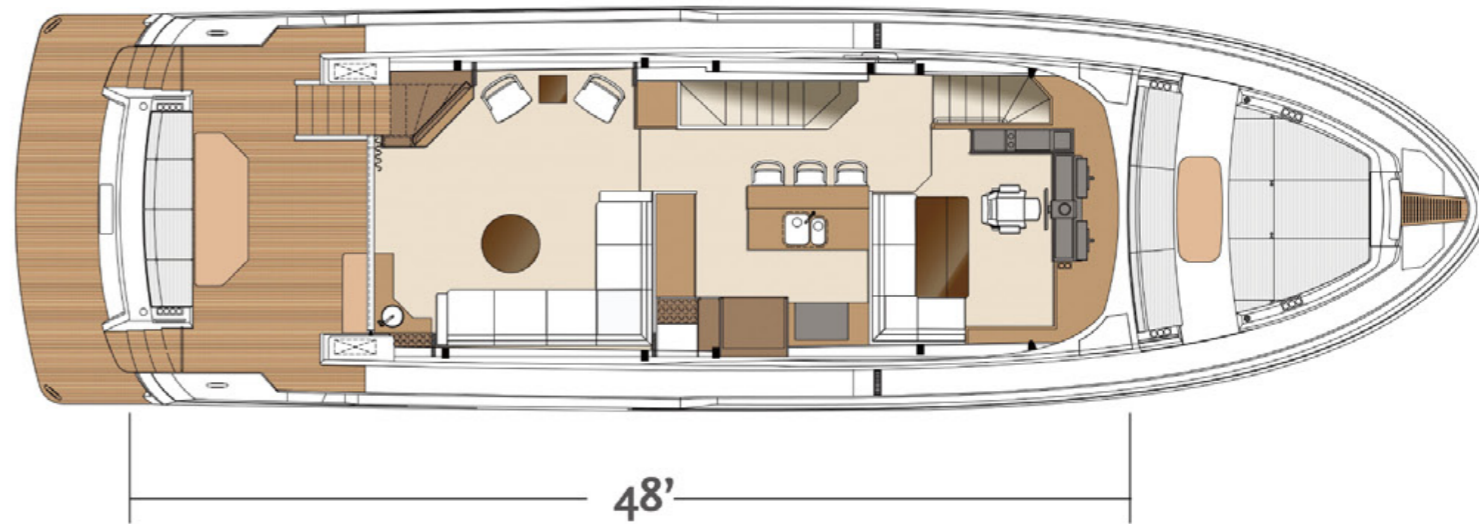
48'

With nearly 48' of open living space, the V68 offers a unique sight line looking right from the forward dining settee to the aft swim platform.

The salon accommodates seating for eight guests with huge glass windows for a panoramic view.

The spacious galley, with an island breakfast bar, can be integrated with a lower helm or a country kitchen. Full-size appliances and an abundance of cabinets and countertop space round out this functional area.

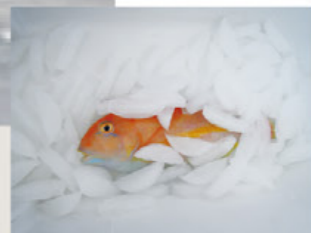
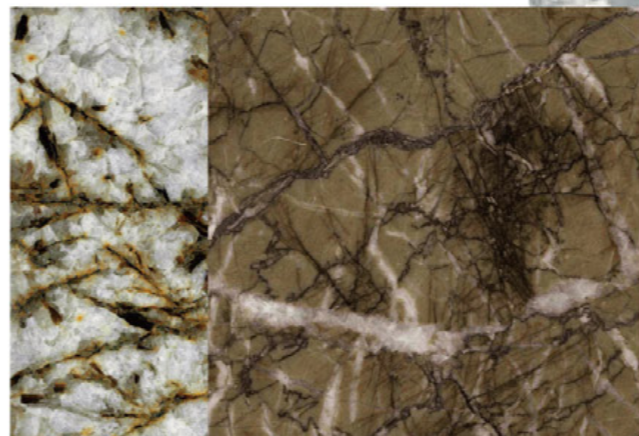
Main Deck with Lower Helm



Main Deck with Country Kitchen



Quality interior wood work, more than anything else, separates us from the competition. Wood craftsmanship of this level is only found in custom yachts.







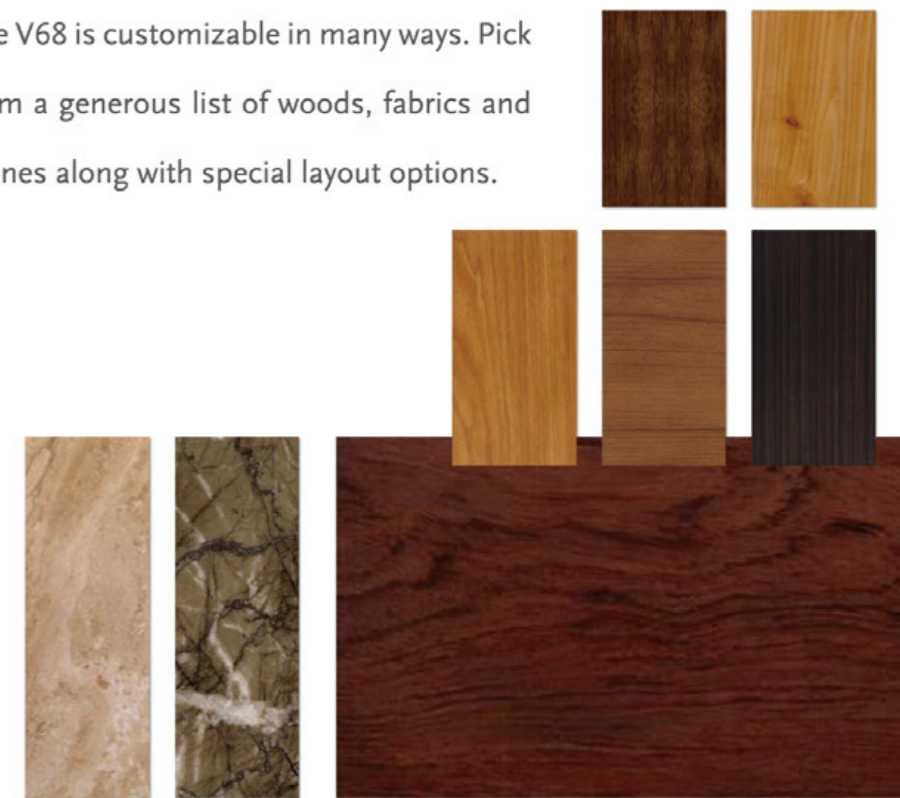
Whether you are in the galley, dinette or salon the sight lines in the V68 are extraordinary, offering a 360-degree view of beautiful surroundings.

360°





The V68 is customizable in many ways. Pick from a generous list of woods, fabrics and stones along with special layout options.









Lower Deck

Large 3+1

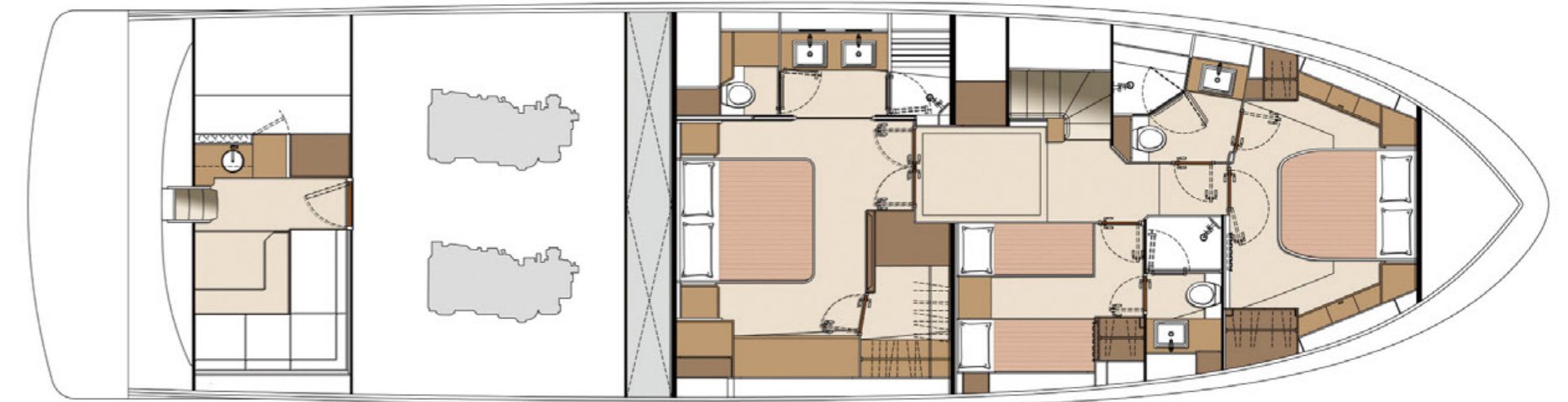
The incredible feeling of space one might experience aboard a superyacht is especially present in all of the staircases and connecting corridors onboard the V68.

As privacy is a luxury, all three cabins are ensuite with truly practical space.

The master foyer is three square meters (32.29ft²) that leads you to a 19'-6" (6M) full beam master cabin – space much larger than most yachts up to 80 feet.

In the stern, this space can be arranged for crew quarters, fishing/diving gear, or a utility room.

Lower deck with Master Head to Port



Lower Deck with Master Forward





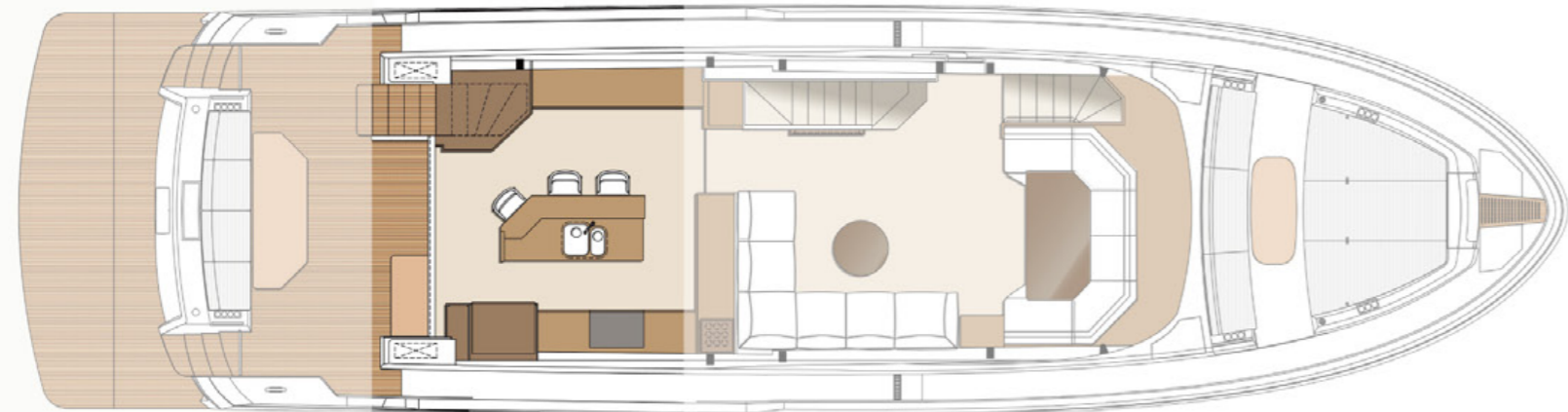




Two more unique features...

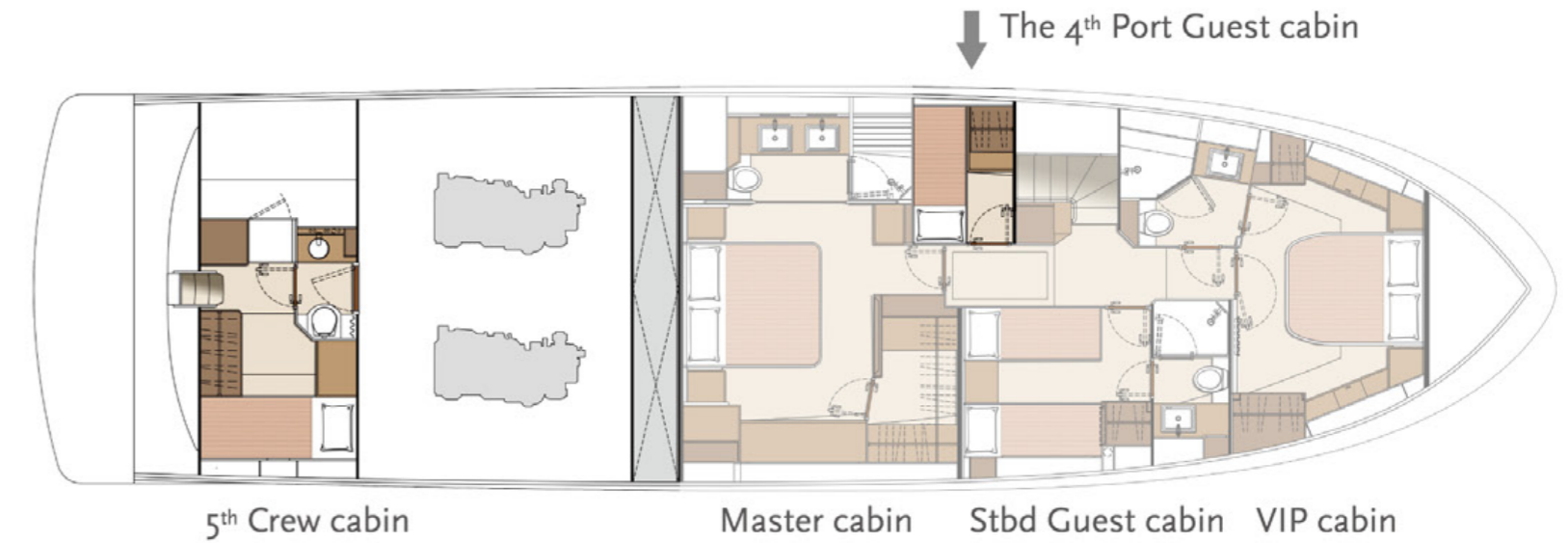
Galley Aft

The Horizon Design Team has also prepared an aft galley design with a fully open view to the aft deck.



3+1

A fourth cabin, next to the master cabin, is also available with Hi/Lo bunks for those who need more accommodations. With this smart option, your V68 will have four cabins plus three heads in the forward living area. With a crew cabin arrangement, Horizon offers up to five staterooms and four heads in this configuration.

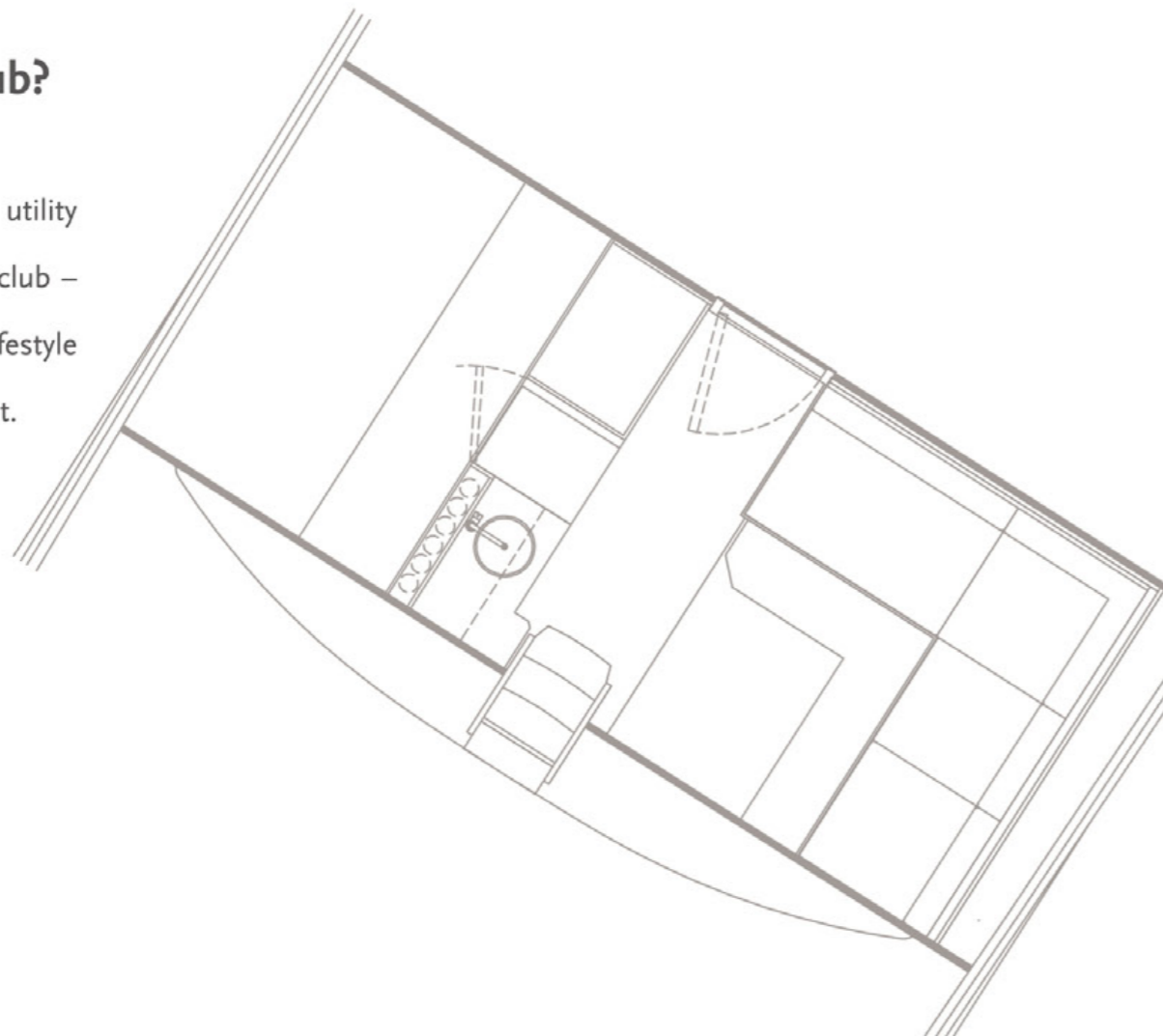




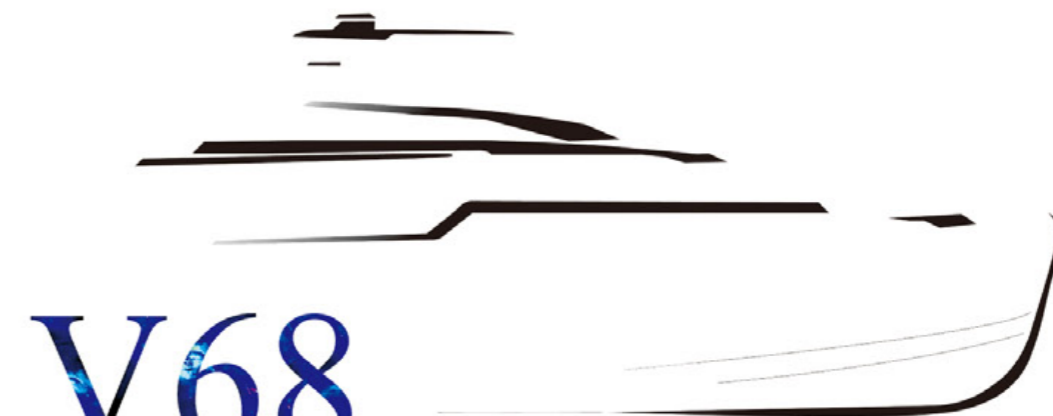
ne last detail...

How about a beach club?

The V68 features options for a utility room, crew quarters or a beach club – customizable to your boating lifestyle and needs, just a like a superyacht.







V68

It's time to make your dream yacht a reality.

Horizon Core Values

1 and only SYBAss member in Asia

30+ years as a luxury yacht builder

Top **10 largest** & top **5 custom** yacht builder in the world

13 consecutive winner of Asia Boating Awards

790 luxury yachts delivered worldwide

8 yacht series with over **25** models

Sales and support in **5** continents

800 professional yacht builders, including **300+** master craftsmen

Over 1,130,000 sq ft area, with **4** specialized shipyards for building our yachts



Horizon Achievements



SUPERYACHT BUILDERS ASSOCIATION

Since 1987, Horizon Group has delivered over 100 superyachts, which is the largest number delivered by any yacht builder in Asia. We joined SYBAss in 2010 and remain the only qualified luxury yacht builder and SYBAss member in the Far East to date. Horizon's superior yacht quality and advanced build technology is highly competitive with other top superyacht builders around the globe, and we also actively promote the superyacht lifestyle and experience as members of SYBAss.

www.sybass.org



THE WORLD SUPERYACHT AWARDS

The World Superyacht Awards is the most prestigious awards programs for superyachts over 100 feet. Each year, a panel of judges selects the best 100+ superyachts, within various categories, that have been delivered to their owners within the past year. In 2009 the Horizon P130 "Miss Rose" was selected as a Finalist, and in 2010 the Horizon RP120 "Espresso" was Finalist; the Horizon RP120 "Muses" and P136 "Angara" were both 2012 Finalists. The Horizon RP110 "Esther 7" was a Finalist in the 2015 World Superyacht Awards.

www.worldsuperyachtawards.com



ASIA BOATING AWARDS

Founded in 2005, the Asia Boating Awards recognizes and selects the best performing shipyards and their outstanding achievements within the Asian yachting industry for the past year. Horizon is the only Taiwan yacht builder with an unbreakable record of 12 consecutive "Best Asian Yacht Builder" awards since 2006. Horizon Group CEO John Lu received the "Personality of the Year" award in 2015. In 2018, the Horizon FD85 was awarded "Best Asian Built Yacht". The Asia Boating Awards is an annual event organized by famous Asian yacht magazines Asia Pacific Boating and China Boating.

www.asiaboatingawards.com



TAIWAN EXCELLENCE

Taiwan Excellence is the premier award for "made in Taiwan" products and presented only to revolutionary high quality and high value products. The Gold Award -- the highest honor that a company can achieve within Taiwan Excellence -- is awarded to the top 10 finalists out of 1,000 Taiwan products reviewed by expert judges. Horizon received our first Taiwan Excellence award in 2010, and we have won an award each subsequent year for the outstanding features in and performance of our luxury yachts. In 2018, the Horizon FD85 was awarded our eighth Taiwan Excellence award trophies.

www.taiwanexcellence.org





To see the elegant V68 underway, please scan the QR CODE.

All specifications and information inside is subject to change.