

SUNSEEKER MANHATTAN 53



YACHT SPECIFICATION

FOR SALE: Step aboard this flawlessly presented Sunseeker Manhattan 53, professionally extended to 60 feet of pure sophistication. From the moment you enter, the yacht exudes a “new boat” freshness and meticulous care, offering a rare blend of timeless design and modern upgrades. Crafted for owners who demand excellence in every detail, this flybridge cruiser delivers a seamless fusion of performance, comfort, and style—making it a standout in Southeast Asia’s luxury yacht market.

• BUILDER.	SUNSEEKER	• NAVIGATION:	RAYMARINE
• YEAR.	2012	• CABINS:	4
• LENGTH.	60Ft 2" (18.35mtrs)	• BATHROOM:	3
• BEAM.	15Ft 5" (4.7 mtrs)	• SLEEPS:	6
• DRAFT.	4Ft 1.6" (1.26 mtrs)	• LOCATION:	PATTAYA, THAILAND
• DISPLACEMENT.	60,389 lbs -27,400 kg		
• ENGINE.	2x MANN R6 800HP		
• GENSET.	KOHLER 12KW		
• FUEL TANK LITERS.	580 gal -2,200 ltrs		
• FRESH WATER TANK LITERS.	158 gal -600 ltrs		
• CRUISE SPEED IN KNOTS.	20 Knots		
• MAXIMUM SPEED IN KNOTS.	30 Knots		
• RANGE.	250 mm		

ASKING PRICE

\$650,000.-



IMMACULATE SUNSEEKER MANHATTAN 53 — 60FT OF REFINED LUXURY

Step aboard this immaculately presented Sunseeker Manhattan 53, all 60 feet of sheer elegance and performance. Designed for discerning owners who demand style, comfort, and functionality, this flybridge yacht is a standout in its class—boasting a fresh "new boat" aroma and pristine condition throughout.

ACCOMMODATION & LAYOUT:

- 4 Cabins:
- Full-beam Master Suite with ensuite
- Forward VIP Cabin with generous storage
- Twin Guest Cabin
- Crew Quarters aft, discreetly positioned at the hydraulic swim platform
- Spacious Saloon: Plush seating, entertainment zone, and panoramic windows
- Forward Dinette: Adjacent to helm station with latest Raymarine electronics
- Lower Galley: Fully equipped and ample, featuring premium appliances including a Miele dishwasher
- Outdoor Living & Entertaining

FLYBRIDGE:

- Expansive dining area
- Integrated BBQ grill, cooler, sink, and sunpad
- Newly laid teak decking

MAIN DECK

- Comfortable dining area and sun pad for alfresco lounging

Bow Area:

- Large sun pad for sun-soaked relaxation

TECHNICAL & UPGRADES

- Hydraulic Swim Platform: Effortless tender launch and water access
- Recently Installed Kohler Generator: Reliable power for extended cruising
- Latest Raymarine Navigation Suite: Precision and ease at the helm
- New Teak Decking: Sundeck and main deck walkways - Enhancing both aesthetics and durability

This Sunseeker Manhattan 53 is a rare opportunity to own a yacht that feels virtually brand new, with every detail meticulously maintained and upgraded.

Whether you're hosting guests, cruising the coastline, or enjoying a quiet escape, this vessel delivers luxury without compromise.

Available for viewing now — step aboard and experience the difference.



SUNSEEKER MANHATTAN 53

MACHINERY

- Engines - 2 x MANN 800 hp
- Engine Year - 2012
- Engine Hours - 1,280 hours
- Generator - 1 x KOHLER 12Kw
- Generator Year - 2024
- Generator Hours 465 hours
- Fuel Cap - 580 gal 2,200 lts
- Cruising Speed - 20 knots
- Max Speed - 30 knots
- Range - 250 Nm
- Air Condition - Vimar
- Engine Service - August 2025

ACCOMIDATION

- 4 Cabin / 3 Bathroom
- Full Beam Master Suite including ensuite- midships
 - VIP Guest Suite Double Berth including bathroom access -forward
 - Guest Cabin Twin Berth -Starboard
 - Crew Cabin Aft -swim platform access
- Sleeps 6 + 1 crew
- Bathrooms 3 - 1 master ensuite, 1 day bathroom + 1 crew bathroom





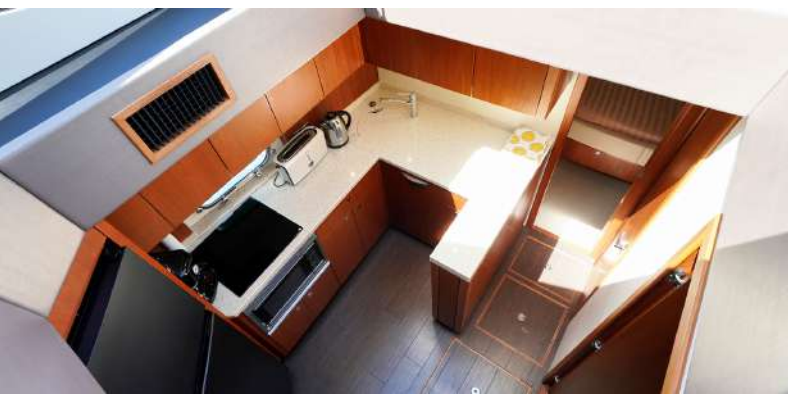
SUNSEEKER MANHATTAN 53

GALLEY

- Location - Forward Midships
- Cooktop - 3 top Euro Kara
- Sink - Stainless
- Refrigeration - Toshiba 150 Lt
- Microwave Convection -Sharp
- Dishwasher - Miele
- Gas Alarm
- Ample Storage above and below with C shaped bench preparation area
- Wine Cooler - In saloon
- BBQ - Sundeck
- Cooler Box - 60 ltr -Sundeck

ELECTRICAL EQUIPMENT

- MANN Engine Monitoring
- Chartplotter - Raymarine Axiom pro 125 Navionics
- GPS - Raymarine
- Radio - Raymarine 240E
- Radar Raymarine Quantum 2
- Depth Sounder - RaymarineST60+
- Depth Sounder-Raymarine Dragonfly 7
- Log Speed - Raymarine ST60+
- Shore Power 240v
- Bow Thruster - Side Power





SUNSEEKER MANHATTAN 53

ELECTRICAL EQUIPMENT

- Music Interior - Sony
- Music Exterior Fusion
- TV Saloon - LG Electronic stow away
- Speakers BOSE
- Batteries House - 1 x 4 (New 1year)
- Batteries Engine - 2 x 2 (New 1year)
- Battery Charger - (New 1 year)
- TV Master Suite LG+ Sony Music
- TV Guest Cabins x 2

TANKS

- Water Tanks - 1
- Water Capacity 158 gal - 600 lt
- Holding Tanks 1
- Fuel Tanks - 1
- Fuel Capacity - 580 gal -2,200 lt





SUNSEEKER MANHATTAN 53

ANCILLARY

- Life Jackets - 15
- First Aid
- Life Rings - 2
- Flares (February 2025)
- Fire Extinguishers 3 interior
- Fire Suppression remote engine room
- Search Light - forward of sundeck
- Windlass - Lewmar
- Chain - 60 mtrs
- Anchor - CQR 25 kg

ANCILLARY

- Sunpad - 3 sunpads - 1 forward bow, 1 aft deck, 1 sundeck flybridge
- Seating 4 seating areas -Dinette, Saloon + coffee table, aft deck & Flybridge Sundeck
- Swim Platform Hydraulic
- Interior - American Walnut

