

**BRABUS**  
MARINE



**BRABUS** SHADOW 1200

**BRABUS**  
MARINE



## BRABUS PERFECTION & PASSION

BRABUS has been developing and building high-performance supercars for over 40 years; transforming vehicles of the Mercedes-Benz brand into stylish, unique vehicles – made in Germany. The world-renowned luxury mobility brand offers custom solutions for requests of any kind: From upgraded engines and elegantly styled aerodynamic enhancement concepts to expertly forged alloy wheels, as well as agile yet comfortable sport suspension systems and exclusive interior designs at only the highest level of craftsmanship.

**BRABUS**



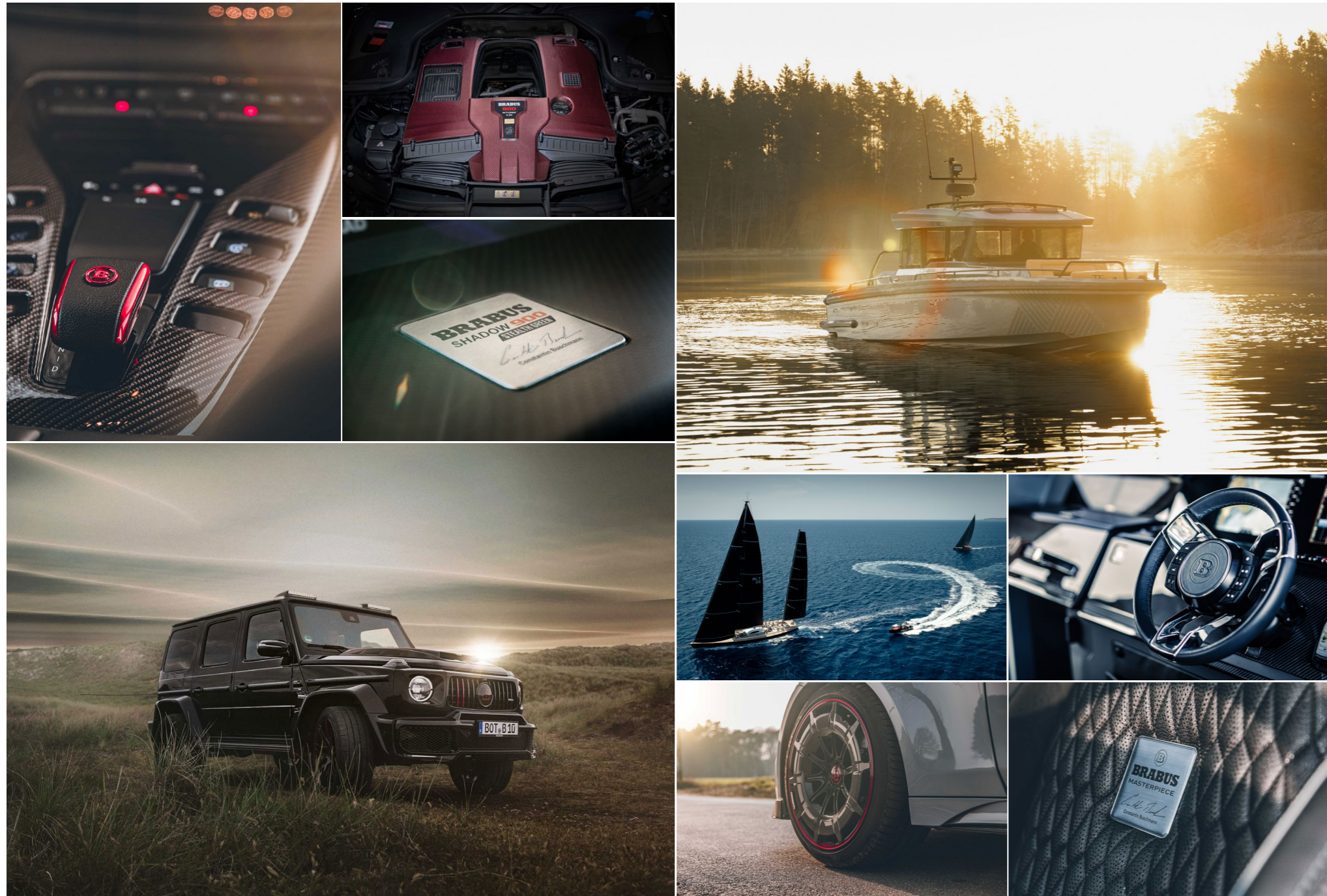
## REDEFINING PERFORMANCE DAY BOATING

BRABUS Marine is the result of the cutting-edge alliance between two of the most renowned companies in their respective genres. Bringing together the long-established, high-performance luxury automotive car producer BRABUS and the award-winning Finnish boat builder Axopar Boats, to redefine luxury day boating through a range of ultra-exclusive and exciting powerboats.

**BRABUS**  
MARINE







## THE CORE OF BRABUS MARINE

As one of the world's most iconic boat brands specializing in luxury products for markets around the world, BRABUS Marine focuses on several key principles:

**PERFORMANCE** – All of our boats are characterized by superior performance courtesy of the latest high-tech engine technology. Through an unwavering commitment to perfection and a pursuit to redefine the superlative, the BRABUS Shadow range offers exceptional in-class power, an unparalleled driving experience and endless “go-anywhere” capabilities.

**LUXURY** – Our dual-personality design ensures that our performance figures do not come at the expense of on-board luxury. We guarantee sophisticated comfort as well as exclusivity on and below deck designed for a selected group of boat owners who wish to enjoy only the very best boating experience.

**FUNCTIONALITY** – Beyond the right looks and performance, BRABUS Marine as a brand stands for accessibility, comfortable handling and unmatched drivability. Through a 100 % tech driven development approach, we combine functionality with ease of movement.

**BRABUS**  
MARINE





SIGNATURE EDITION

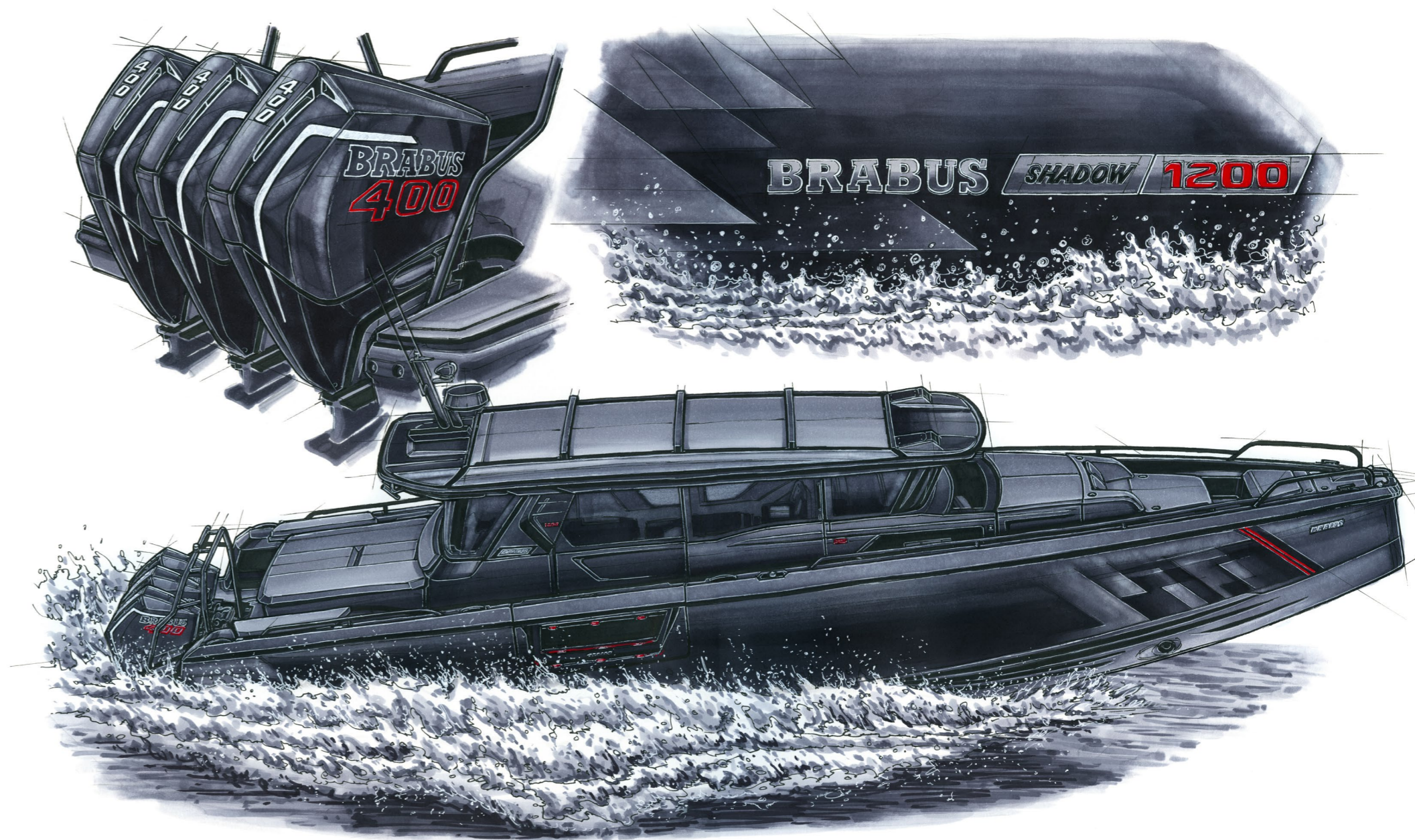


## THE BRABUS SHADOW 1200 XC CROSS CABIN BLACK OPS SIGNATURE EDITION

More power, more 1-Second-Wow, more BRABUS than ever before. The BRABUS Shadow 1200 XC Cross Cabin Black Ops Signature Edition is the biggest BRABUS Shadow ever built to date and boldest BRABUS statement out there on the sea. Combining unparalleled power and performance, with incredibly luxurious ambience and innovative comfort, this Grand Tourer of the ocean has absolutely everything and more, bringing next-level usability and versatility to the luxury boat segment.

This highly exclusive, new 45-foot size premium range knows how to deliver an unprecedented BRABUS experience on the water through dimension, power and an abundance of comfort, style and onboard usability. Premiering as fully enclosable cabin model and – for the first time in BRABUS Marine history – equipped with triple V10 powered engines and a total of 1200 horsepower, the new Shadow is a true powerhouse and high performer, effortlessly eating up miles while offering all-weather comfort and innovative social space for unlimited adventure at sea.

**BRABUS**  
MARINE



BRABUS SHADOW 1200  
BLACK OPS SIGNATURE EDITION

**BRABUS**  
MARINE

*Ben*  
INKDIAL  
2024



## UNMISTAKABLE LUXURY & COMFORT

Truly impressive onboard this premium-luxury cabin cruiser, are the five massive social spaces onboard – the fore deck, helm, cockpit including the balcony doors, aft deck, and the front lounge with the gullwing doors. Thanks to the extra wide sociable sofa that wraps around the cockpit wetbar, a large dining area, and the option for a u-sofa or an aft cabin on the aft deck, there is plenty of room to entertain guests. Next-level functionality especially meets style and comfort with the innovative, BRABUSIZED balcony doors: simply fold down the spacious side doors in the hull and extend your social and relaxation area amid-ship even further.



**BRABUS SHADOW 1200 XC CROSS CABIN**  
BLACK OPS SIGNATURE EDITION  
U-SOFA LAYOUT

## UNCOMPROMISED ATTENTION TO DETAIL

The BRABUS Shadow 1200 is unlike any other superboat of its size and a perfect match for those who want to renounce compromises and set a statement. Bringing together premium levels of onboard usability with unparalleled levels of versatility. With just a simple touch, seamlessly see the boat transform from an enclosed all-weather cabin to a fully open boat, perfected to deliver premium day and overnight boating experiences with nothing less than the highest level of BRABUS masterpiece luxury and attention for detail.

The dedication to luxurious practicality and passion for detail continues inside the wheelhouse, front cabin and optional aft accommodation, with distinctive carbon fibre detailing, BRABUS fine leather options with BRABUS piping and stitching, and the BRABUS Sign of Excellence. This seal of craftsmanship guarantees that every BRABUS 1200 is built to the highest possible standards with the best materials, underscored by cutting-edge technology and engineering.



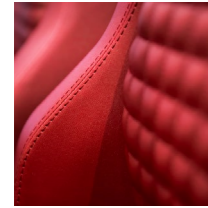
**BRABUS SHADOW 1200 XC CROSS CABIN**  
BLACK OPS SIGNATURE EDITION  
U-SOFA LAYOUT



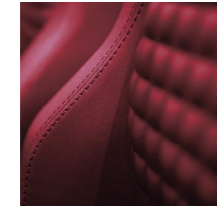
## SHADOW 1200 CUSTOMIZING OPTIONS

Take pleasure in customizing your boat from a selection of high quality vibrant fabric colours; BRABUS Red, BRABUS Merlot, BRABUS Ice, BRABUS Sunrise, BRABUS Platinum or BRABUS Graphite. Furthermore, for the Shadow 1200 XC Cross Cabin you can choose between two BRABUS® Fine Leather colour alternatives in the main cabin.

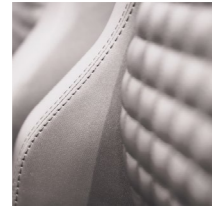
### UPHOLSTERY COLOURS



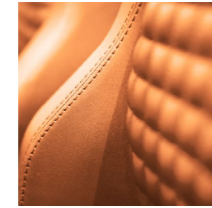
BRABUS RED



BRABUS MERLOT

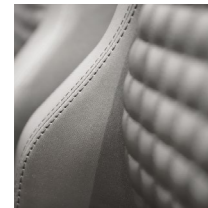


BRABUS ICE



BRABUS SUNRISE

### UPHOLSTERY INTERIOR



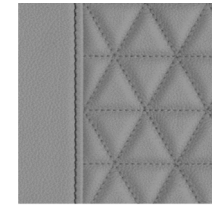
BRABUS PLATINUM



BRABUS GRAPHITE

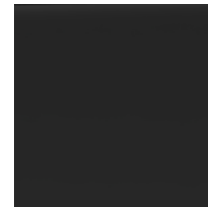


BRABUS FINE LEATHER  
BLACK/LIGHT GREY



BRABUS FINE LEATHER  
LIGHT GREY

### HULL COLOURS



BLACK OPS

**STANDARD OPEN AFT**  
BLACK OPS SIGNATURE EDITION  
BRABUS GRAPHITE



**OPTIONAL AFT BENCH**  
BLACK OPS SIGNATURE EDITION  
BRABUS GRAPHITE



**OPTIONAL U-SOFA**  
BLACK OPS SIGNATURE EDITION  
BRABUS GRAPHITE



**OPTIONAL AFT CABIN**  
BLACK OPS SIGNATURE EDITION  
BRABUS GRAPHITE



## SHADOW 1200 SPECIFICATIONS

### XC CROSS CABIN

Overall Length (incl. Engine)	13,91 m / 45ft 7in
Beam	4,11m / 13ft 6in
Draft to props	1,2 m / 3ft 11in
Weight approx. (excl. Engine)	8000 kg / 17.637 lbs
Fuel Capacity	1390 litres / 368 gal
Construction	GRP
Classification/Passengers	B:12 / C:16
Top Speed	up to 50 knots
Outboard engines	3 x 400 hp
Hull design	Twin stepped 20 degree V "Sharp entry hull"
Accommodation /Berth	2 +2* persons

\*With the optional Aft Cabin

Specifications may be changed without prior notice. Performance may vary due to equipment, weather and load conditions.



**SHADOW 1200 XC CROSS CABIN**  
OPEN AFT LAYOUT  
BLACK OPS SIGNATURE EDITION



**SHADOW 1200 XC CROSS CABIN**  
U-SOFA LAYOUT WITH TABLE  
BLACK OPS SIGNATURE EDITION



**SHADOW 1200 XC CROSS CABIN-**  
AFT CABIN LAYOUT  
BLACK OPS SIGNATURE EDITION

The colour palettes are for illustrative purposes only. The colour on the final product might differ from the palette shown in this brochure.





## BRABUS X JOBE

[jobsports.com/brabusxjobe](https://jobsports.com/brabusxjobe)



**BRABUS**  
MARINE



**BRABUS**  
MARINE

REDEFINING  
PERFORMANCE DAY BOATING

[brabusmarine.com](https://brabusmarine.com)